

Bellevue College

Fall 2019 student portfolio

Aprilia showroom	3
Alpine chalet	8
Kehinde Wiley gallery	11
Illustrations	14

aprilia

dynamic legacy through
compression and diffusion



I was given the task to design a flagship showroom in downtown Seattle that would encompass retail, service, and hospitality areas for the Italian motorcycle company Aprilia

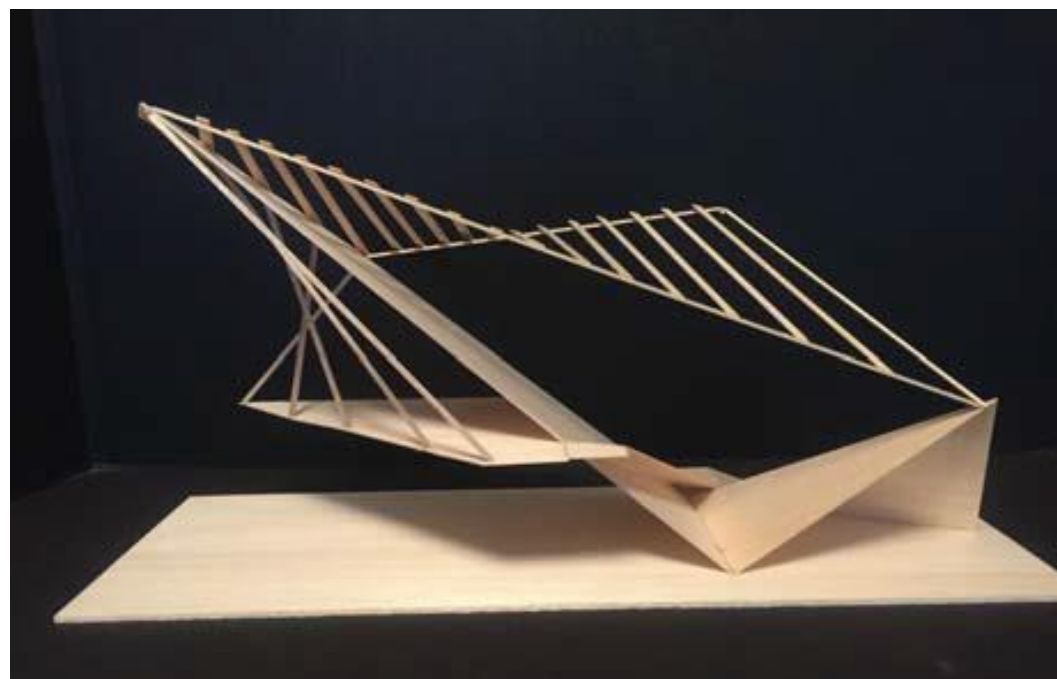
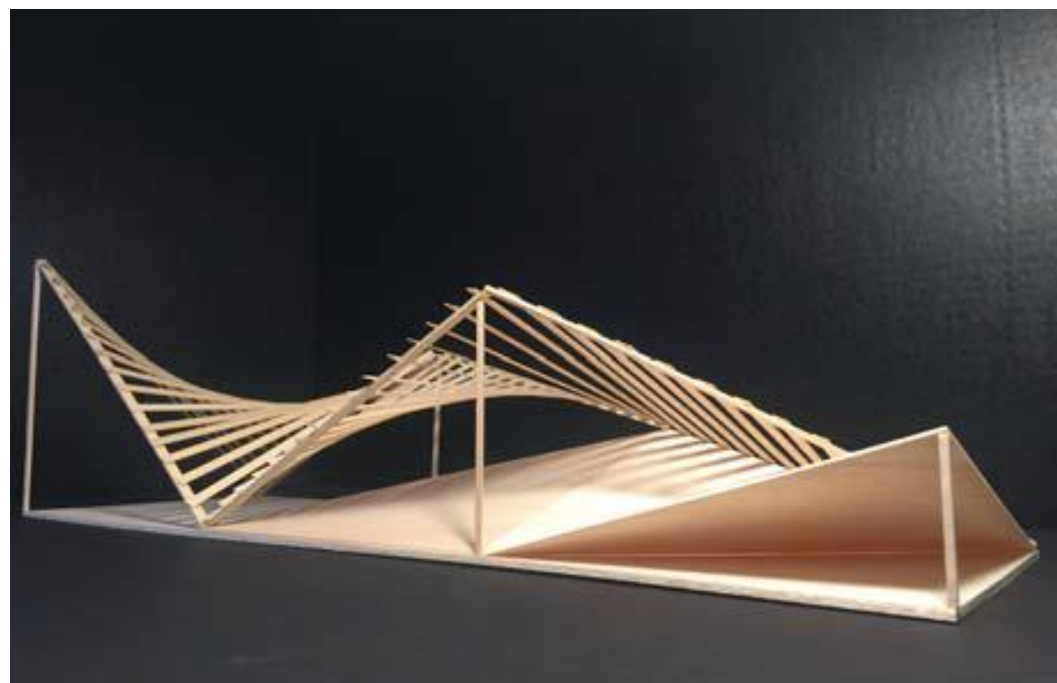
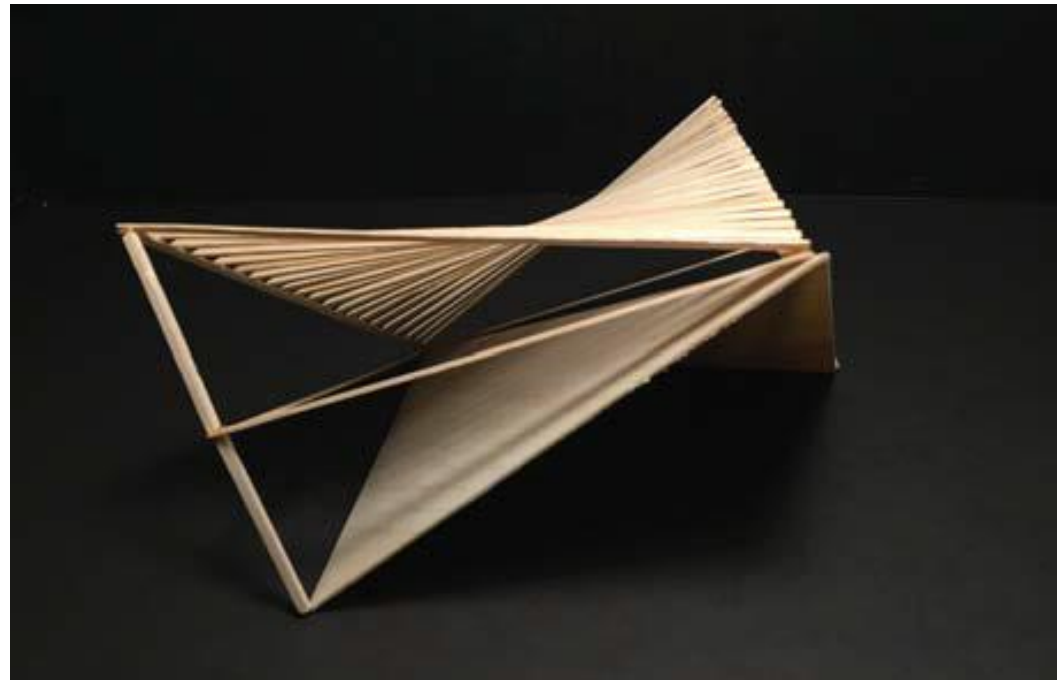
PROJECT	APRILIA SHOWROOM
CLASS	INDES 273
CONCEPT	COMPRESSION AND DIFFUSION

Conceptual models draw inspiration and highlight the dynamic equilibrium embodied by a racing bike.

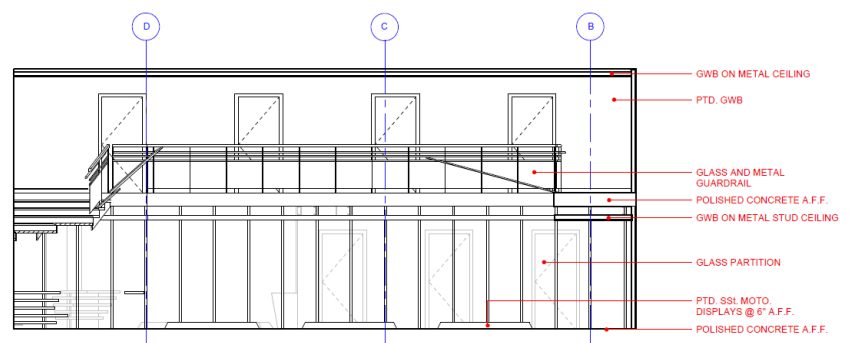
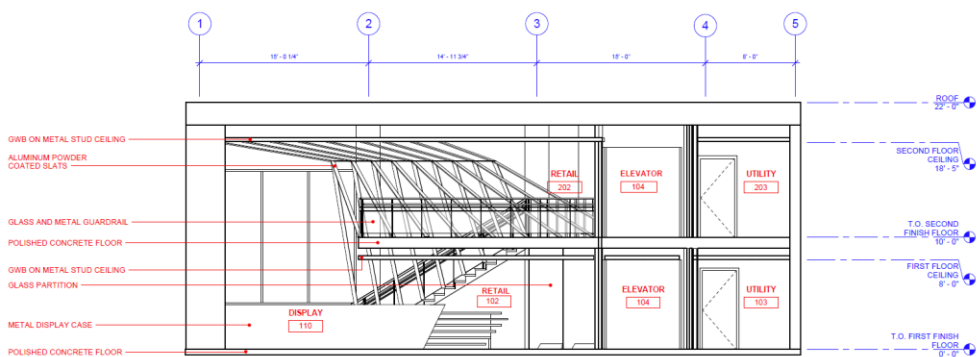
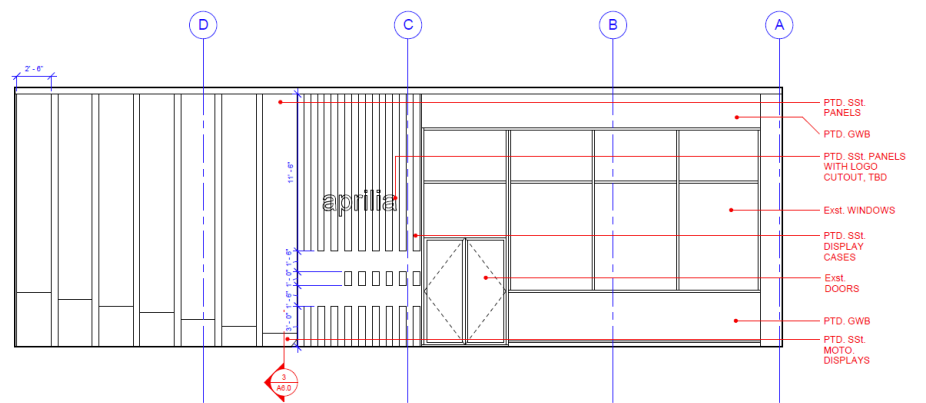
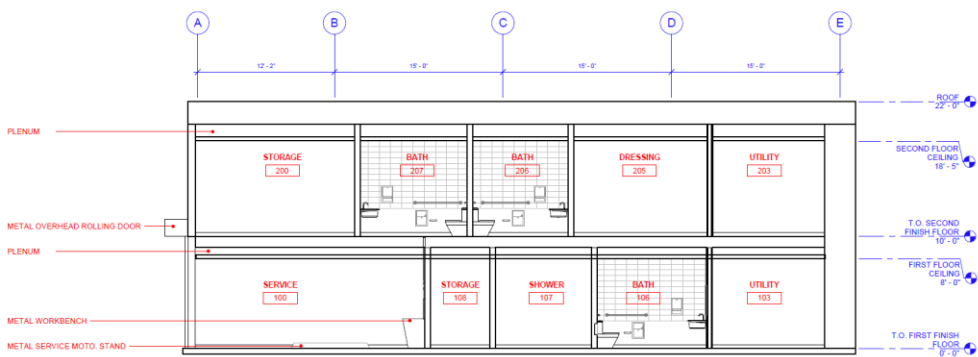
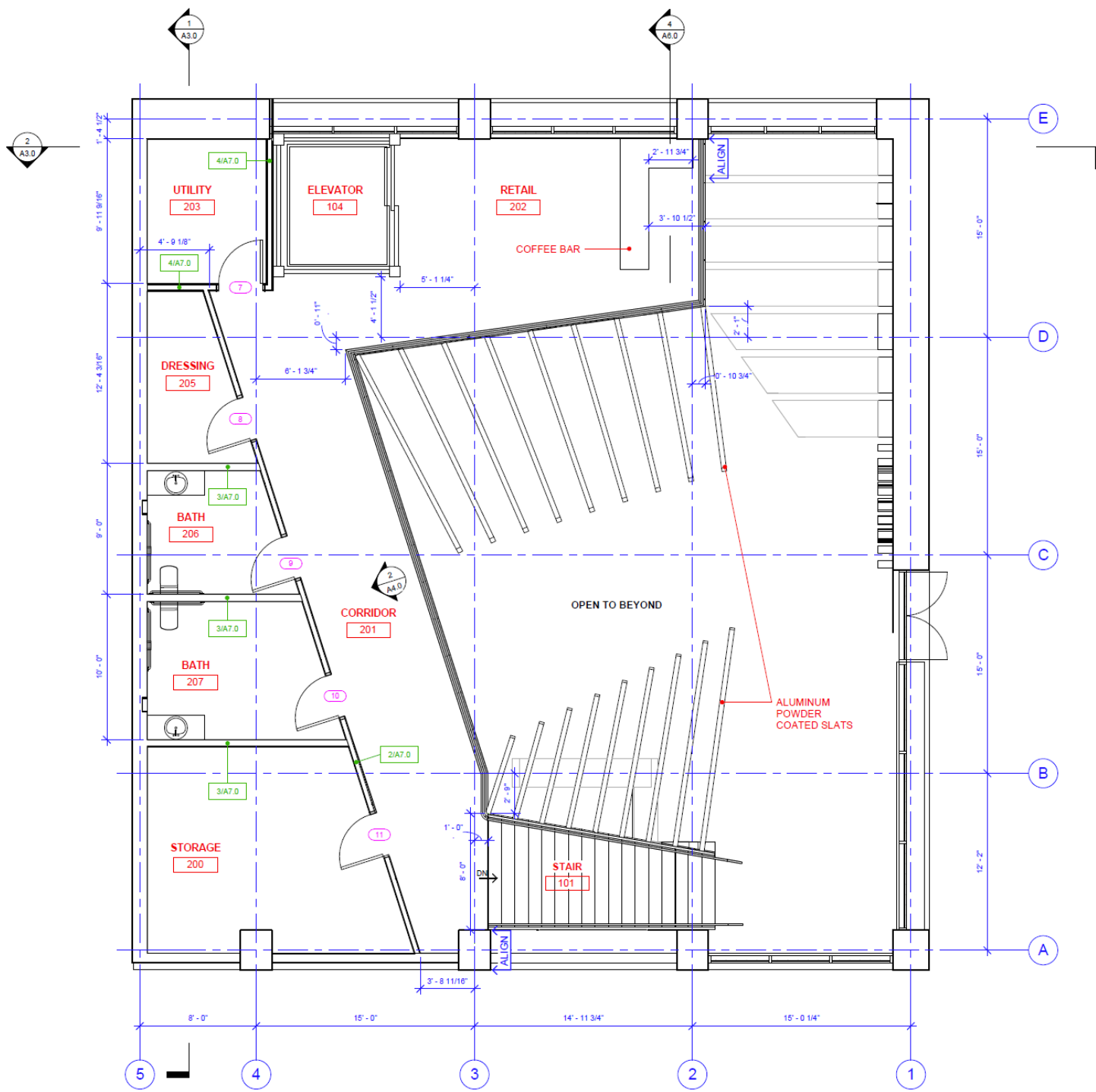
Multiple iterations were executed and reviewed to achieve the final model.

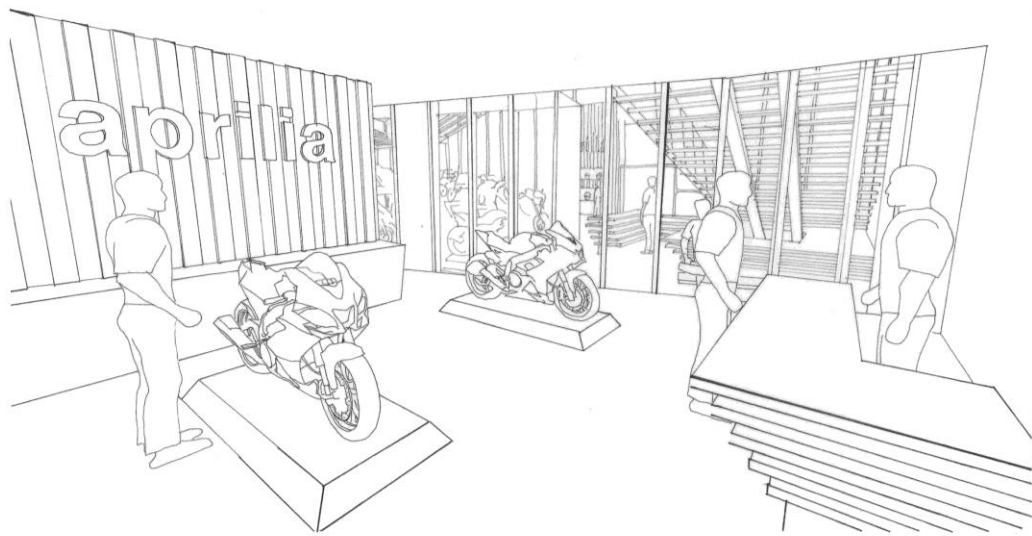
The client has a long history in global motorsports and mobility production, and with this understanding it was imperative to incorporate traditional aspects into the design to create a space that felt exciting and new, while rooted in history.

Edge-hinged slats create rhythm and patterns, used in parametric form they become active and dynamic.



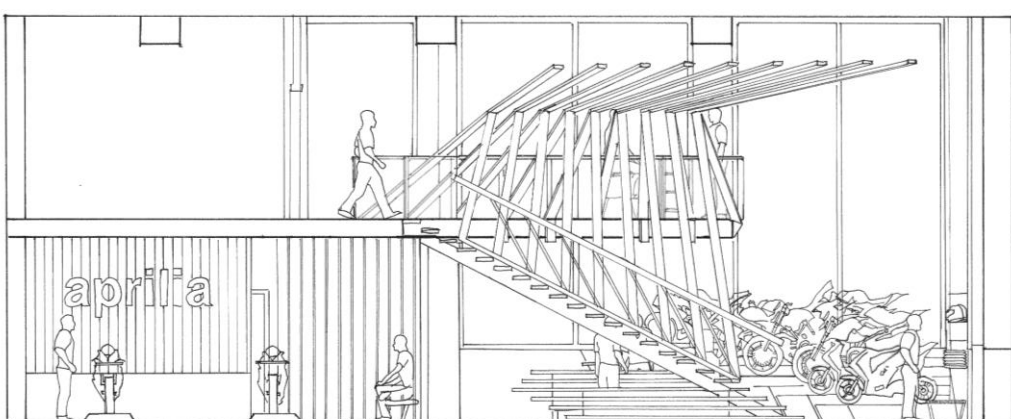
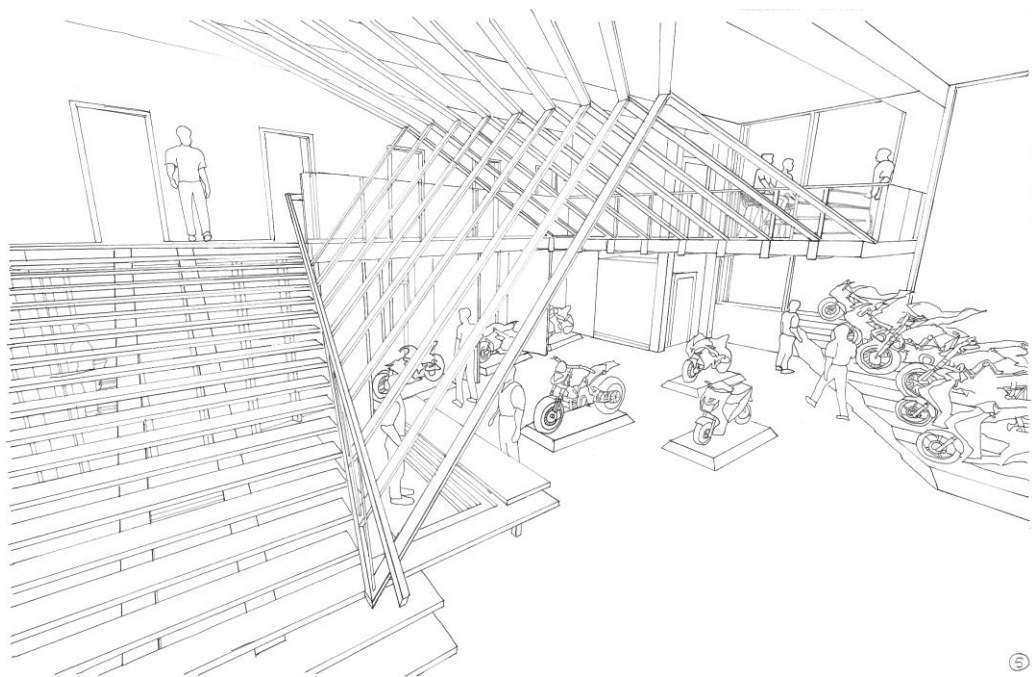
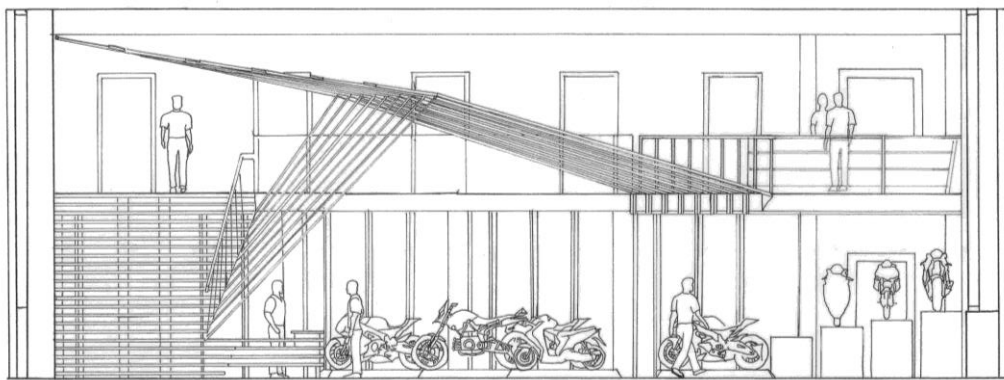
I followed the design approach to split the interior between service, retail, and hospitality areas. The central skeletal feature drives a dynamic connection between the spaces.



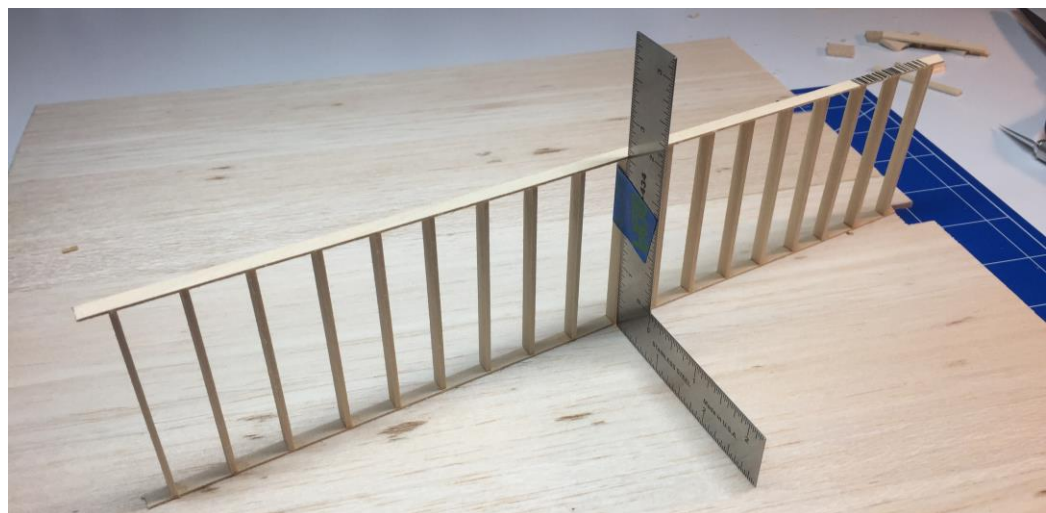


While the skeletal frame in the main room of the space connects the customers to the experience, the floor to ceiling glass panels are used to reflect the same visual cues.

Their main purpose is to separate the service area, give transparency, and visual interest to the showroom, allowing the customers to feel that they are an integral part of the Aprilia experience.



The model was built using balsa, basswood, and plywood. Floors are removable to inspect the structure of the interiors, and the central skeletal feature is held in place by magnets.





An exercise in illustration led to the design of a Winter getaway in the Italian Alps.

The key concept was to highlight the backdrop of the mountains.

The use of natural materials, glass, concrete, and wood allow the resident to feel like they are part of the setting.



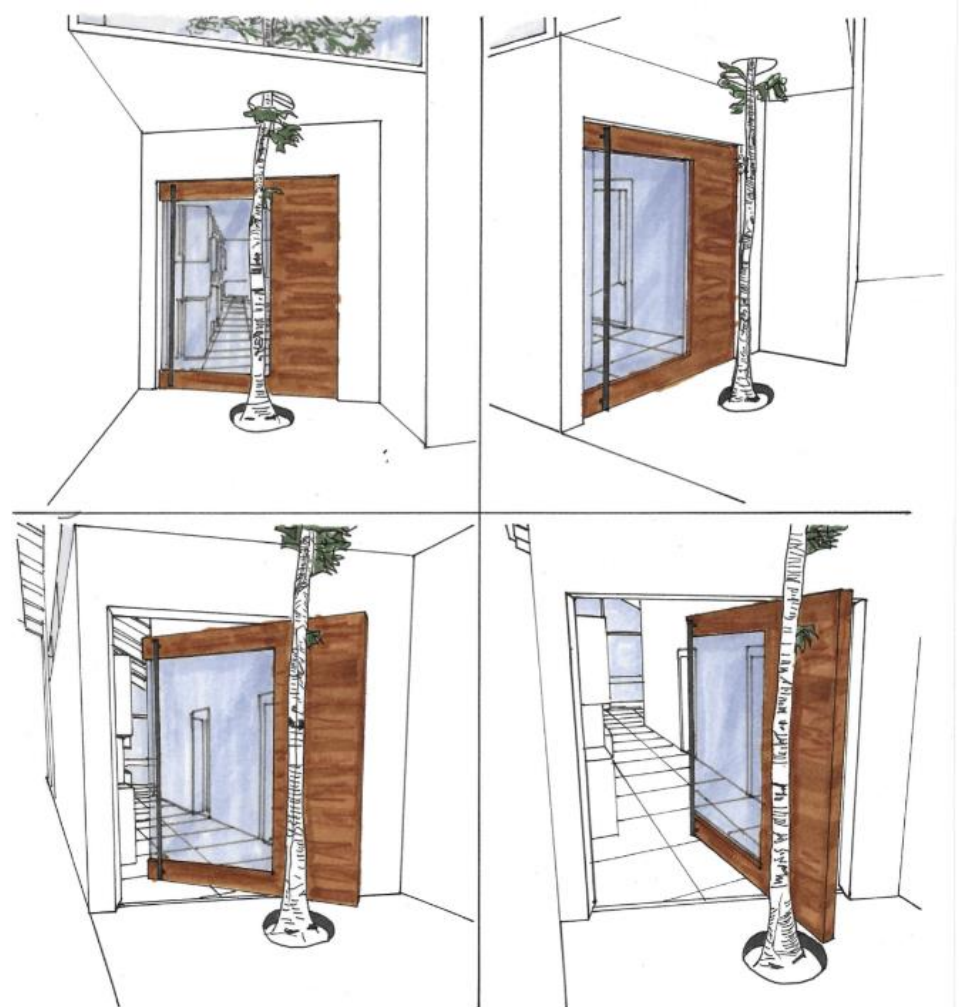
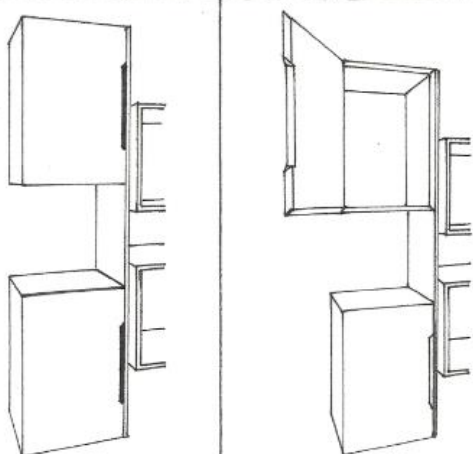
PROJECT
CLASS
CONCEPT

ALPINE CHALET
INDES 265
OUTSIDE INSIDE

Alpine chalet spatial plan and entry details

The dwelling space is split into the two main areas of living and refuge. Specific attention is given to the entryway, as the idea of bringing the outdoors inside was the key visual driver for this project.

With limited space, the long entry corridor was used as a way to display and store collectibles and objects of personal meaning.



Alpine chalet living areas details

The space is open and inviting with modern casework, amenities and furniture.

The overall design was iterated multiple times to get as close as possible to have no interior features interfere with the enjoyment of the outdoors view.

A tree grows from the grounds outside the main door and enters the chalet, bringing literal meaning to the design concept.





The mission was to create a space to showcase a work of art from Mr. Wiley's "World Stage Jamaica", using reveal and conceal, aided by parametric design elements.

Kehinde Wiley is known for his show of highly realistic paintings of contemporary subjects of African descent adopting hero poses directly referencing classical portraiture.

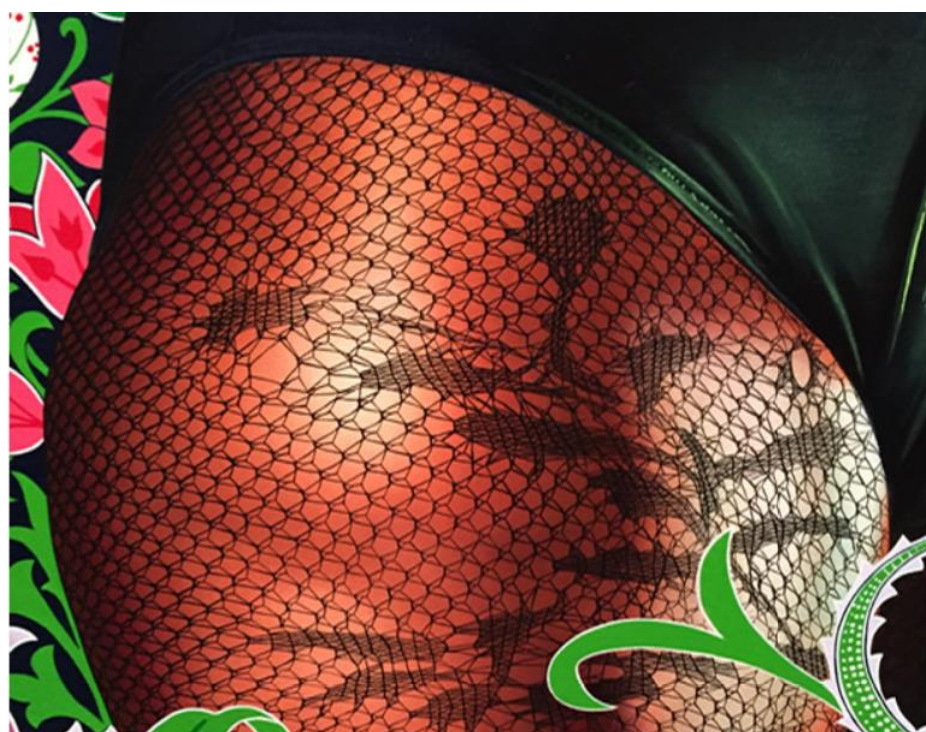
PROJECT	KEHINE WILEY GALLERY
CLASS	INDES 171
CONCEPT	REVEAL AND CONCEAL

While researching Mr. Wiley's process, I was inspired by his incorporation of classical art re-imagined into a modern context, and I used Michelangelo's Cordonata Capitolina as an example of an approach that occludes the destination.

I also found the geometry created by the fishnet stockings on the subject interesting and wanted to explore that in the iteration process.



Cordonata Capitolina in Rome, Italy built by Giacomo dell Porta on plans by Michelangelo



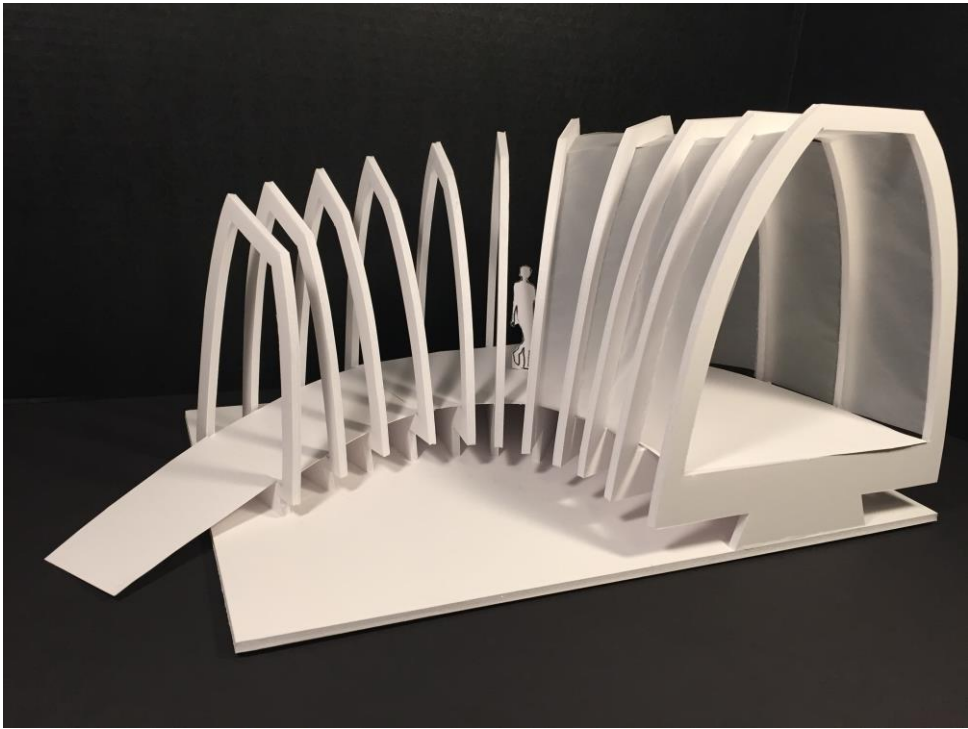
Detail of the fishnet stockings



Portrait of Mary Hill, Lady Killigrew, 2013 - oil on canvas
72 x 60 inches

Kehinde Wiley concept model

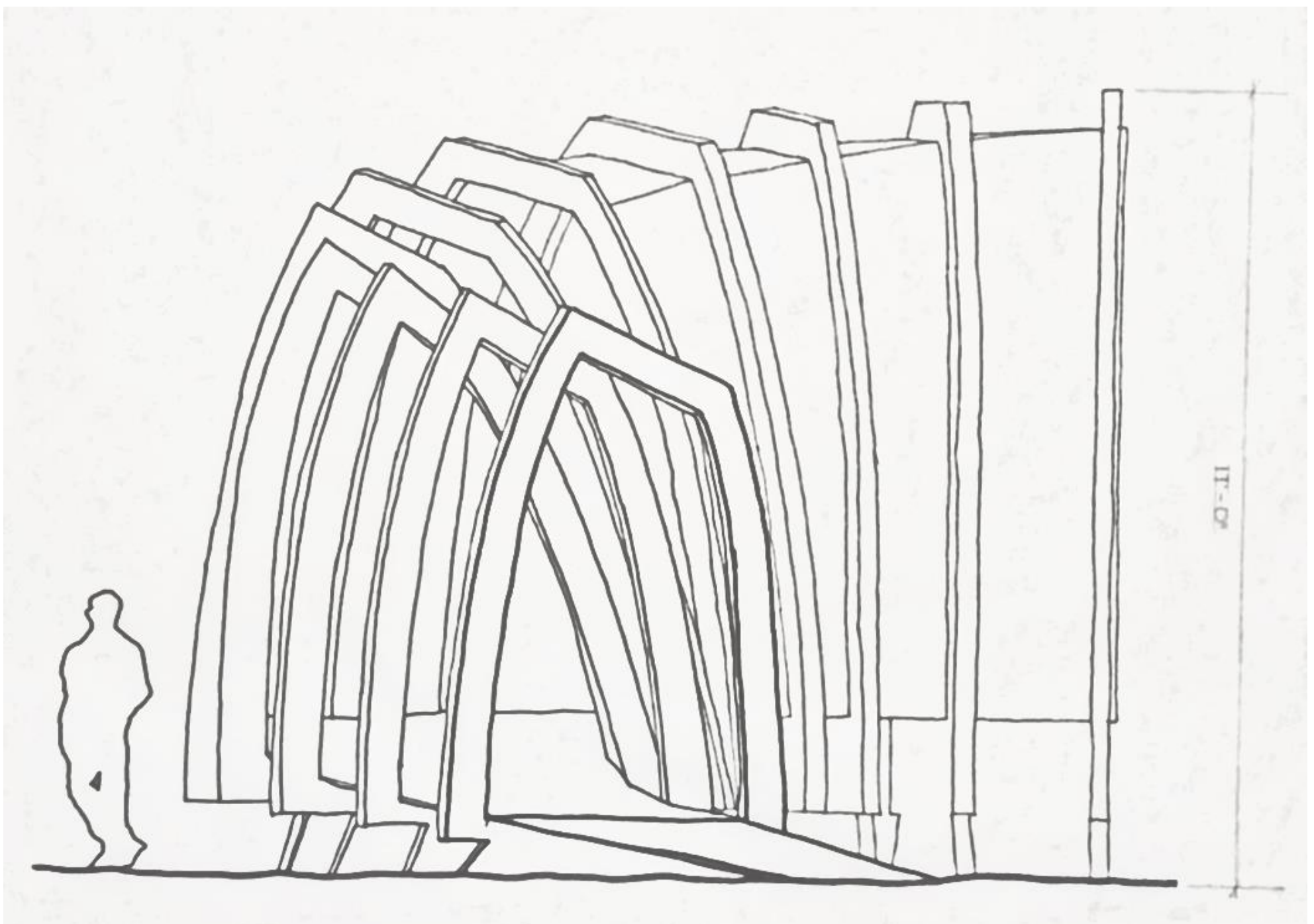
A procession of curving, compressed and expanded ribs assist in the concept of reveal and conceal by leading the viewer on a journey to their destination of Kehinde Wiley's "World Stage Jamaica"



Parametric design defines an organic structure



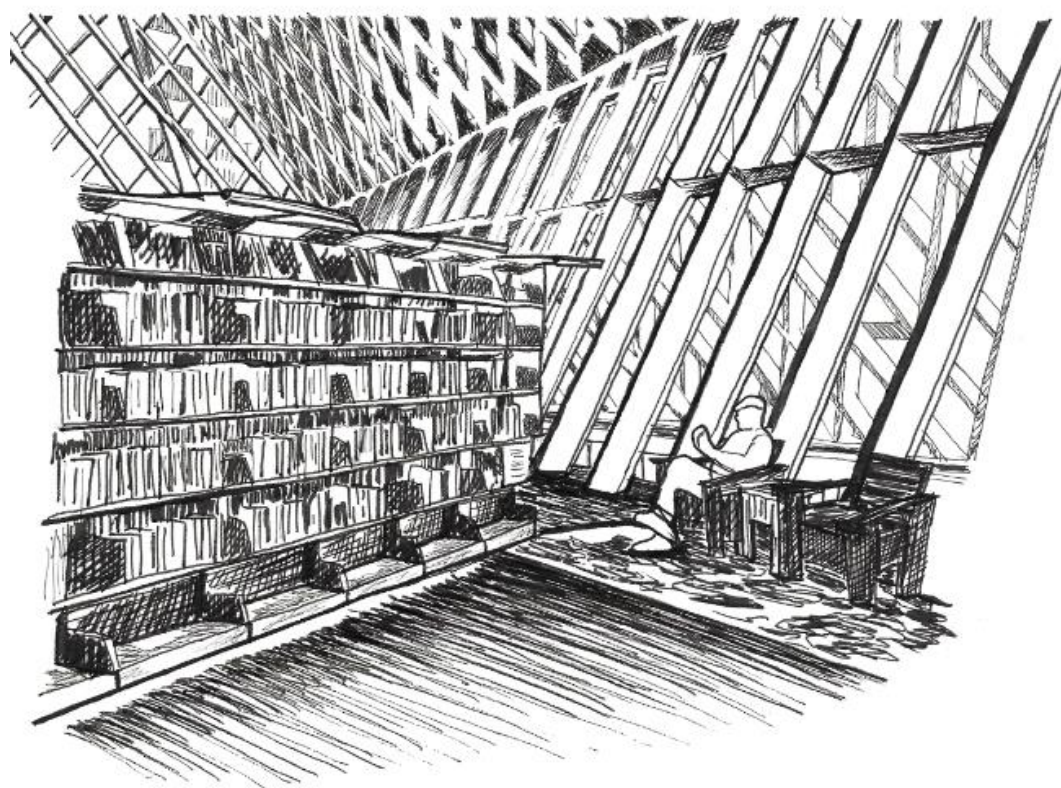
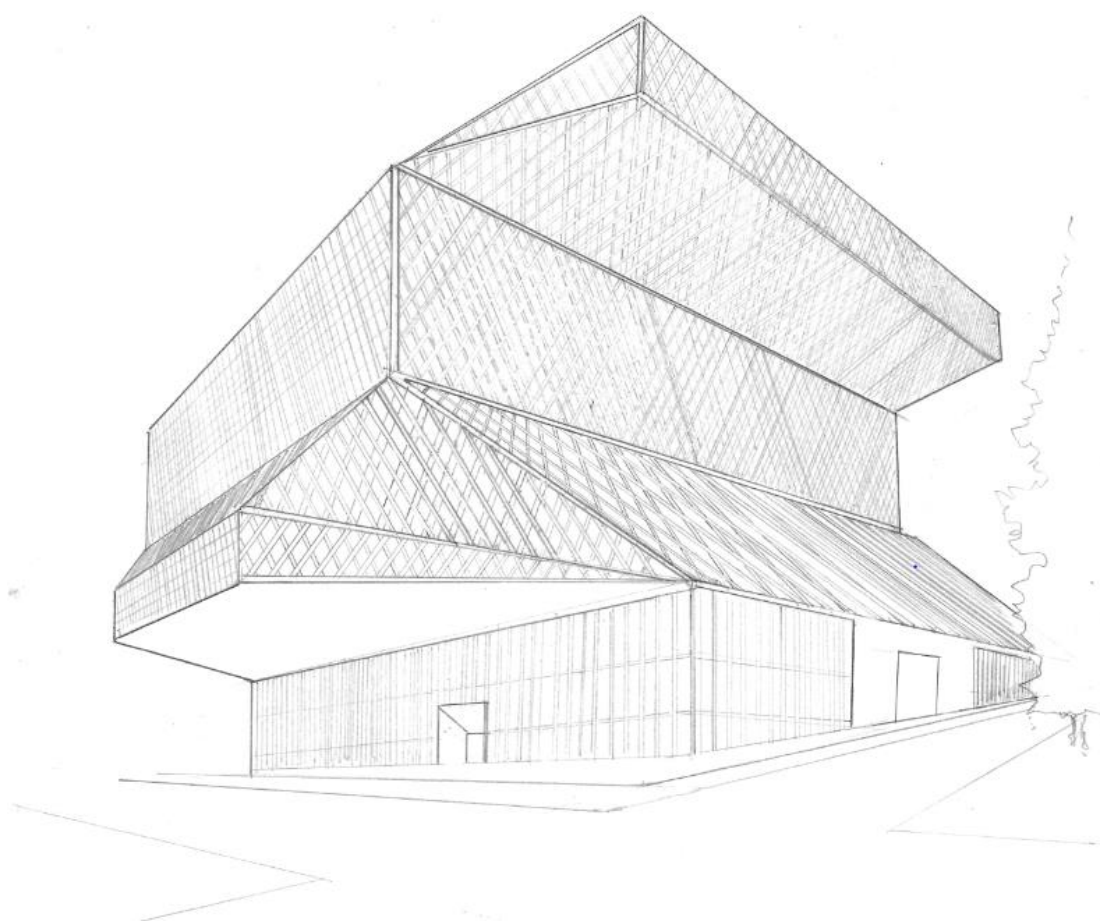
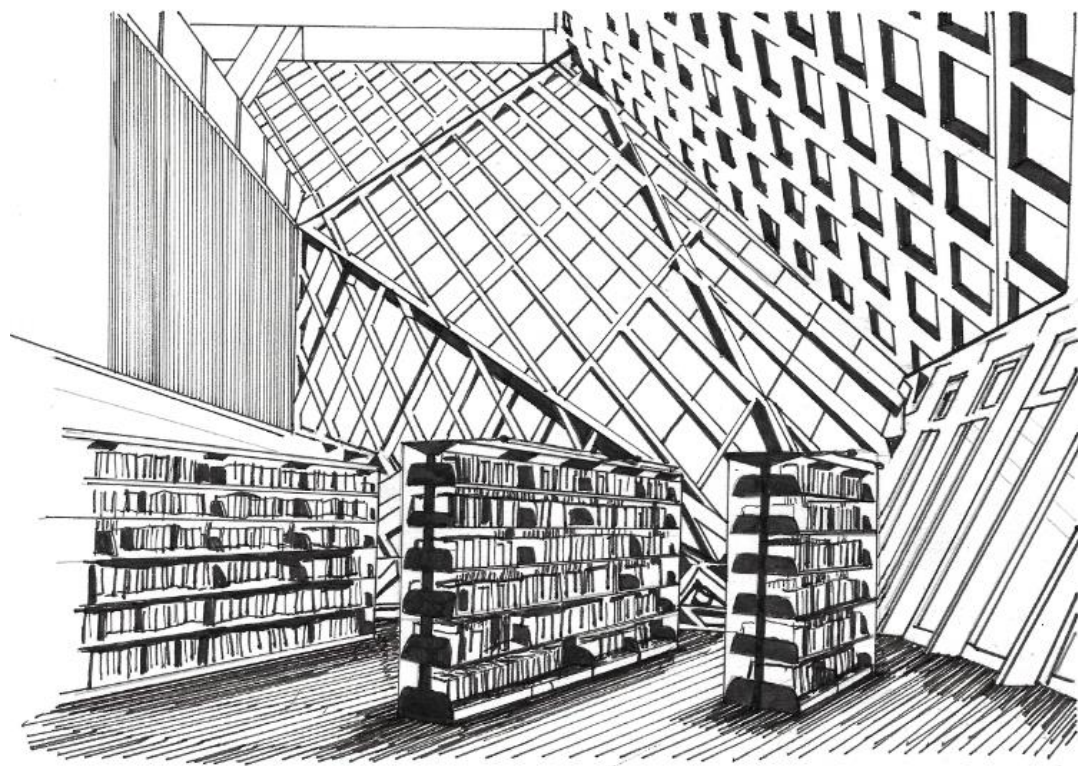
Visitors are guided to the featured art through an environment based on reveal and conceal



A series of sketches in a study of the downtown Seattle public library.

I have explored several different mediums to see which one had the most impact.

In these examples, I used a Micron pen to enhance the linear architecture, and pencils to diffuse the harshness of the structure and give softness.



Illustrations Eames chair and materials

An exercise in rendering materiality using different mediums to achieve the desired effect.



CONCRETE			
	COPIC C4 HB, 4H STAEDTLER	PRISMACOLOR 218 HB STAEDTLER	PRISMA COLOR C 5 HB STAEDTLER
LEATHER			
	COPIC E48 PRISMACOLOR PENCIL DARK BROWN	COPIC E52 400BI PENCIL BROWN	COPIC E57 PRISMACOLOR PENCIL SIENNA BROWN
METAL			
	COPIC C2-C7 STAEDTLER SB, S	PRISMACOLOR 217-222 BLENDEE	STAEDTLER H, 3B PRISMACOLOR 222
STONE			
	STAEDTLER H, HB, 5B	STAEDTLER HB, 3B, 5B FABER-CASTELL S	STAEDTLER HB, 2B
GLASS			
	COPIC B910	COPIC B52	COPIC B32, B24, B77 DECO COLOR OPAQUE WHITE
WOOD			
	COPIC E53, E39 PRISMACOLOR PENCIL SIENNA BROWN	COPIC E42 PRISMACOLOR PENCIL DARK BROWN	COPIC E53 PRISMACOLOR PENCIL DARK BROWN