



Connection | conceal + reveal

Designed by Roxy Tobias
INDES 382 | Interior Design Studio
Winter 2021



ANA CONNECTION | CONCEAL + REVEAL

OVERVIEW

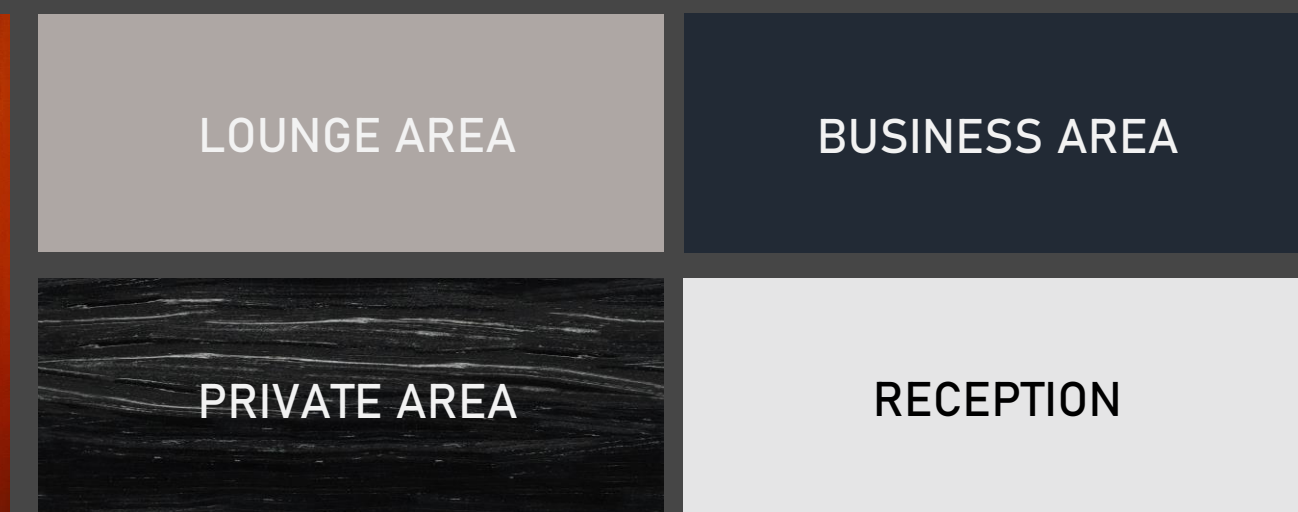
THE CLIENT ALL NIPPON AIRWAYS - ALSO KNOWN AS ANA - TASKED ME WITH DEVELOPING A DESIGN CONCEPT FOR THEIR NEW AIRPORT HUB INSIDE THE SEATAC AIRPORT LOCATED IN SEATTLE, WASHINGTON. REQUIREMENTS INCLUDE THAT THIS SPACE SHOULD PROVIDE AMPLE SEATING, SLEEPING, BUSINESS, AND EATING AREAS FOR TRAVELERS, AS WELL AS WORKING AS A CALLOUT TO THEIR COUNTRY OF ORIGIN, JAPAN.



BRAND & RESEARCH

IN RESEARCHING ANA'S HISTORY, I FOUND THAT ANA IS A COMPANY DEEPLY COMMITTED TO THEIR CUSTOMER'S EXPERIENCE, AND HEAVILY INFLUENCED BY JAPANESE CULTURAL TRADITIONS AND VALUES. THESE CULTURAL VALUES INCLUDE ORDER, NATURE, HIERARCHY, AND PRIVACY; HOWEVER, THE JAPANESE CULTURE IS MUCH MORE COMPLEX THAN THIS.

THIS CONNECTION BETWEEN THE APPARENT SIMPLICITY ON THE SURFACE AND THE HIDDEN COMPLEXITY BELOW IS WHAT I EXPLORED IN MY DESIGN FOR THIS PROJECT.

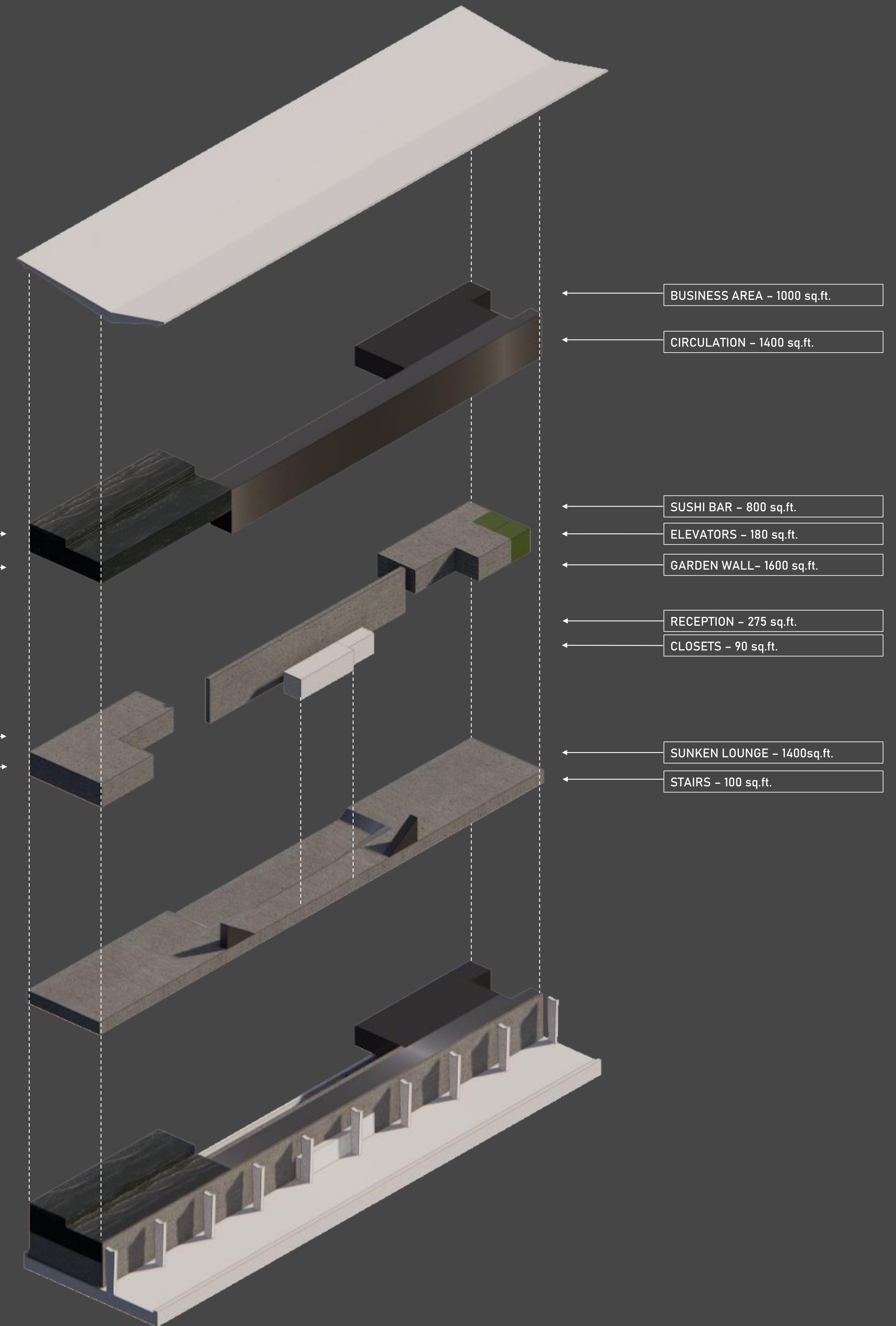


SPA AND BATH - 1000 sq.ft.

SLEEP PODS - 1000 sq.ft.

GRAB 'N GO - 1050 sq.ft.

BATHROOMS - 200 sq.ft.

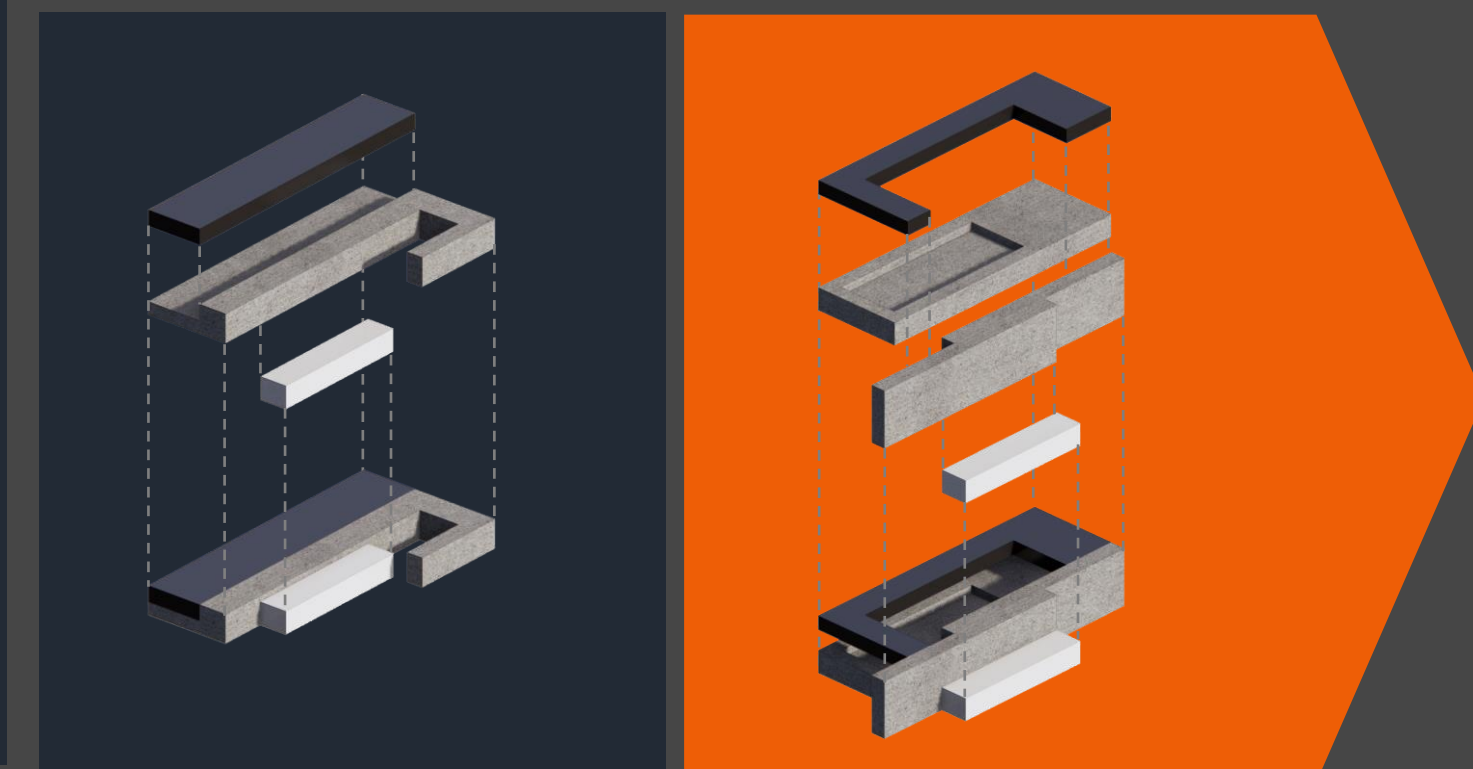
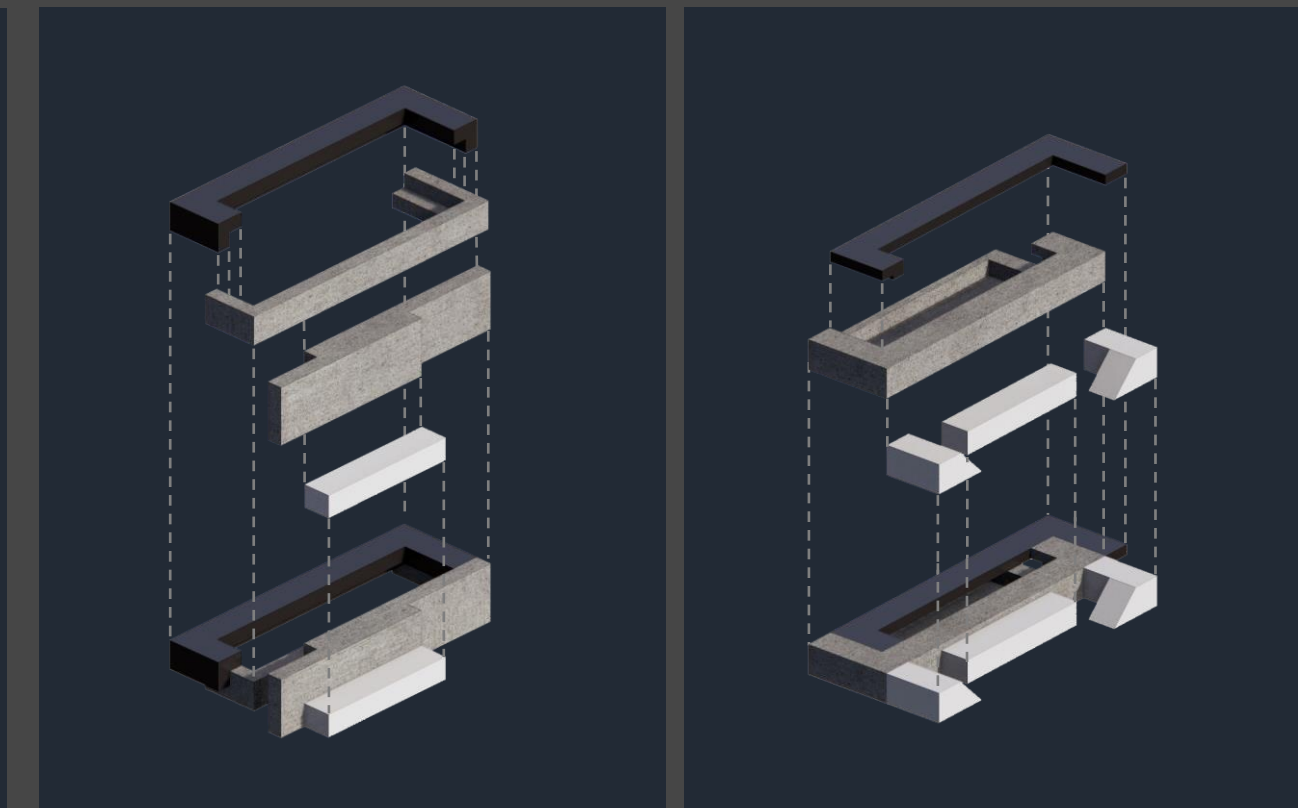


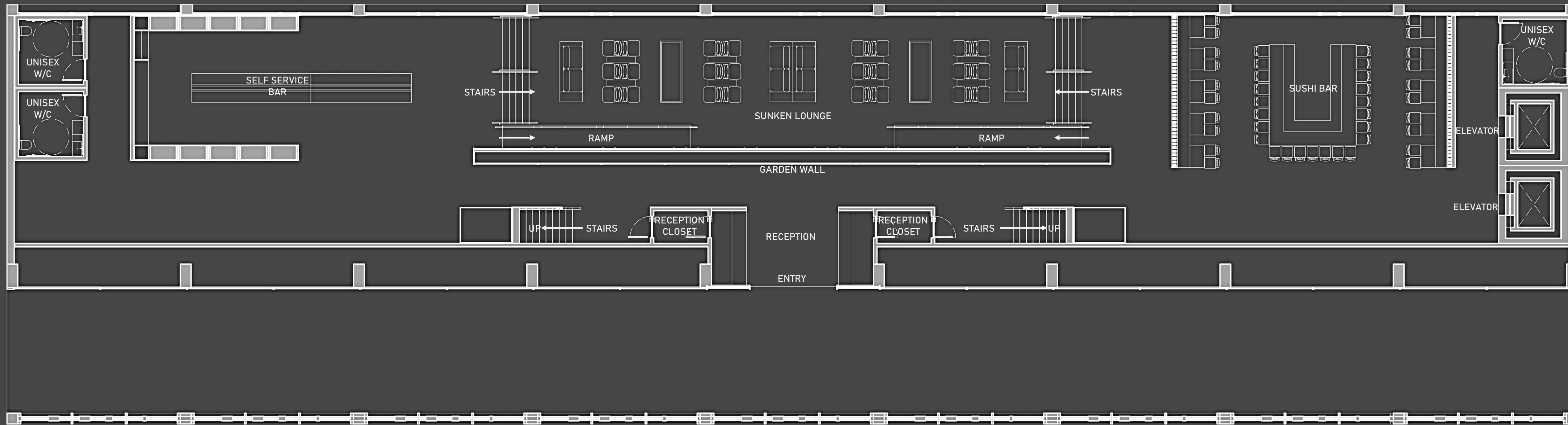
PROGRAM DEVELOPMENT

THE FULL PROGRAM DIAGRAM DEMONSTRATES AN EXPERIENCE WHERE UPON ENTERING THE SPACE ON THE GROUND PLANE VISITORS ARE GREETED BY AN EXPOSED RECEPTION AREA.

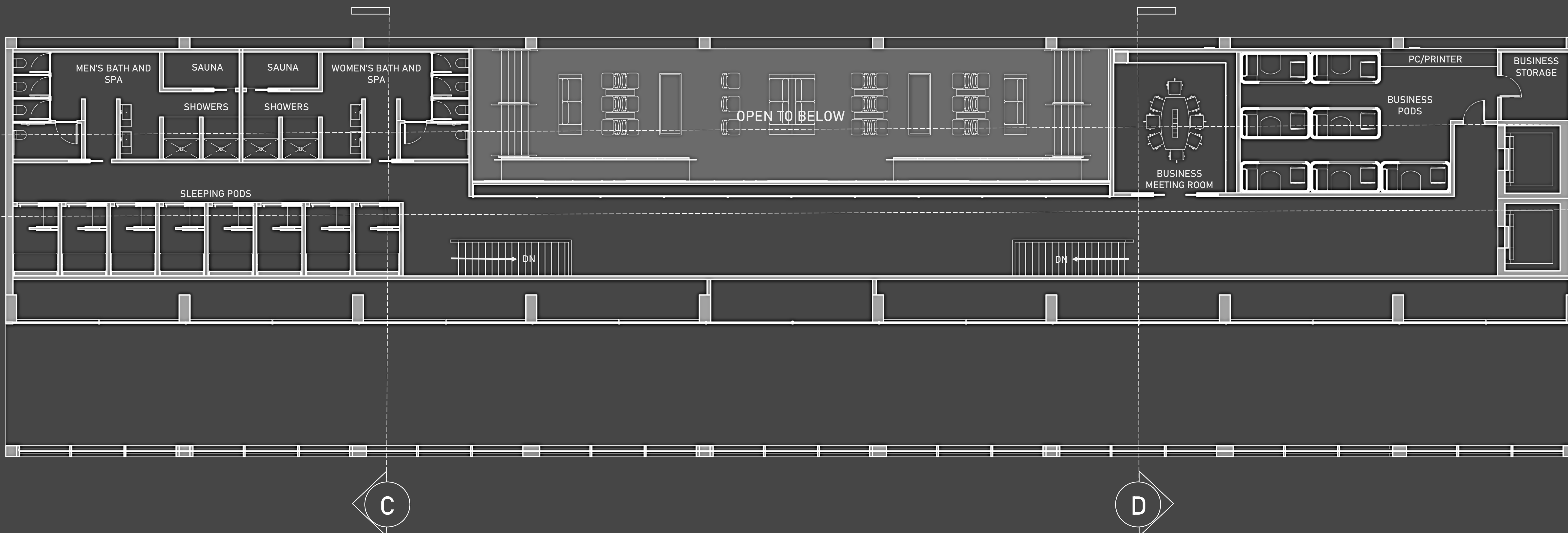
ONLY WHEN THE VISITOR PASSES BEHIND THE RECEPTION AREA, THE SPACE BEGINS TO UNFOLD.

AT THIS POINT, THE LOUNGE AREA IS CONCEALED BY A LONG CORRIDOR. AS THE VISITOR CONTINUES DOWN THE CORRIDOR THE LOUNGE SPACES ARE REVEALED. ABOVE THE LOUNGE IS THE BUSINESS AND PRIVATE AREAS THAT FLANK EACH SIDE LEAVING A VOID THAT CREATES A SHARED ATRIUM.





A First Floor Plan
 Scale 1/8" = 1-0'
 4' from finished floor



B Second Floor Plan
 Scale 1/8" = 1-0'
 4' from second floor ff

E

F

C

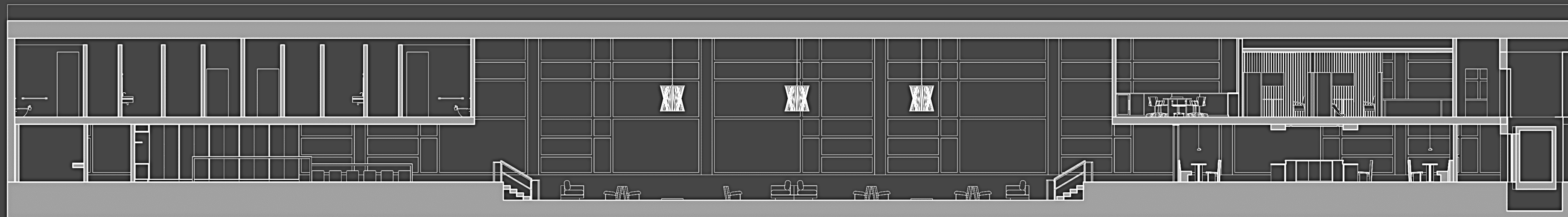
D



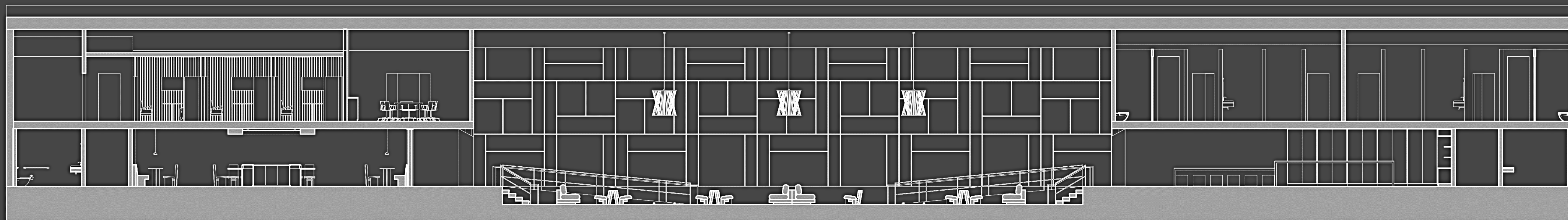
C Cross Section View
Scale 1/4" = 1-0'



D Cross Section View
Scale 1/4" = 1-0'



E Longitudinal View
Scale 1/8" = 1-0'



F Longitudinal View
Scale 1/8" = 1-0'

ANA EXPLODED RENDERINGS + DOLLHOUSE VIEW

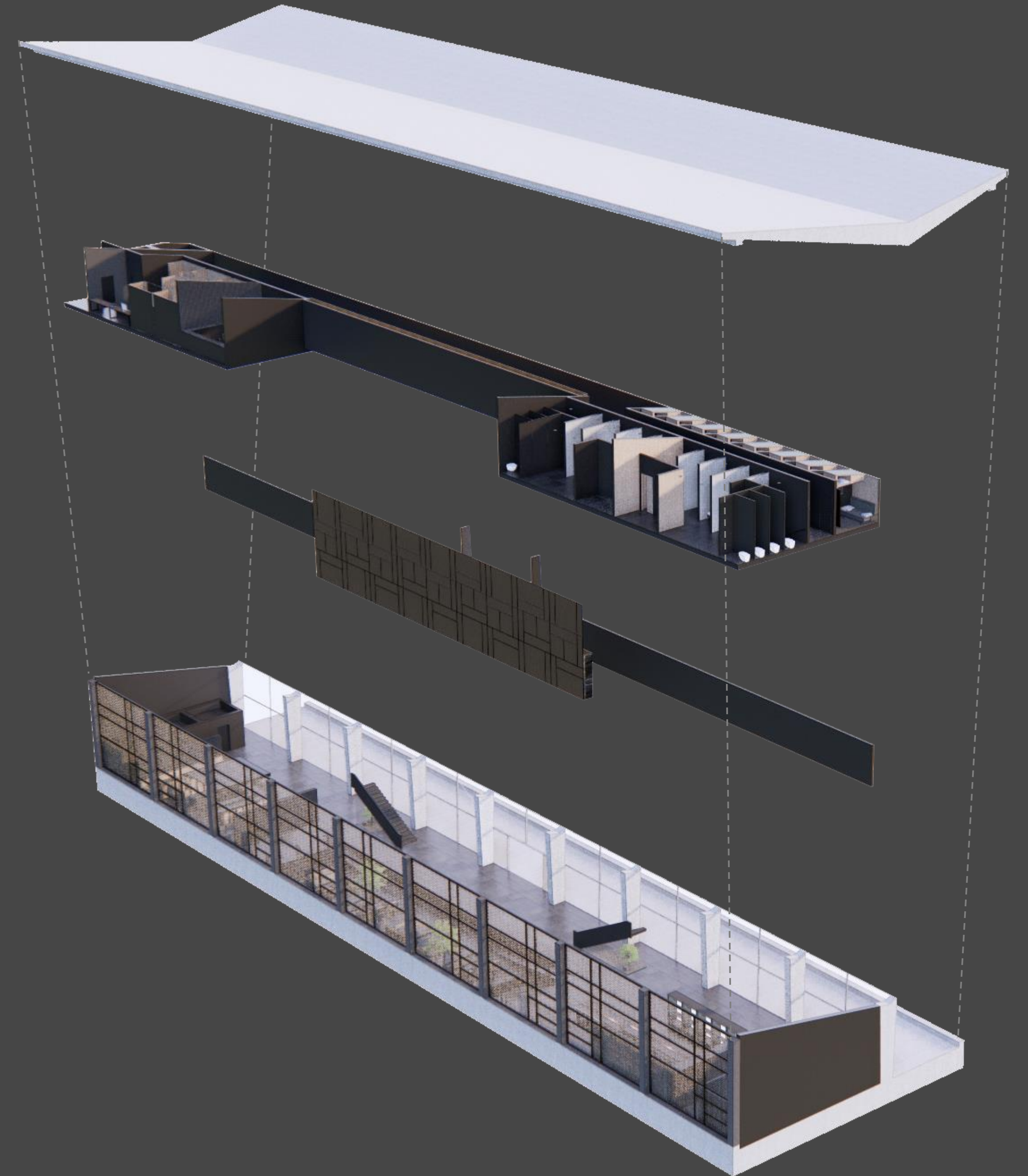
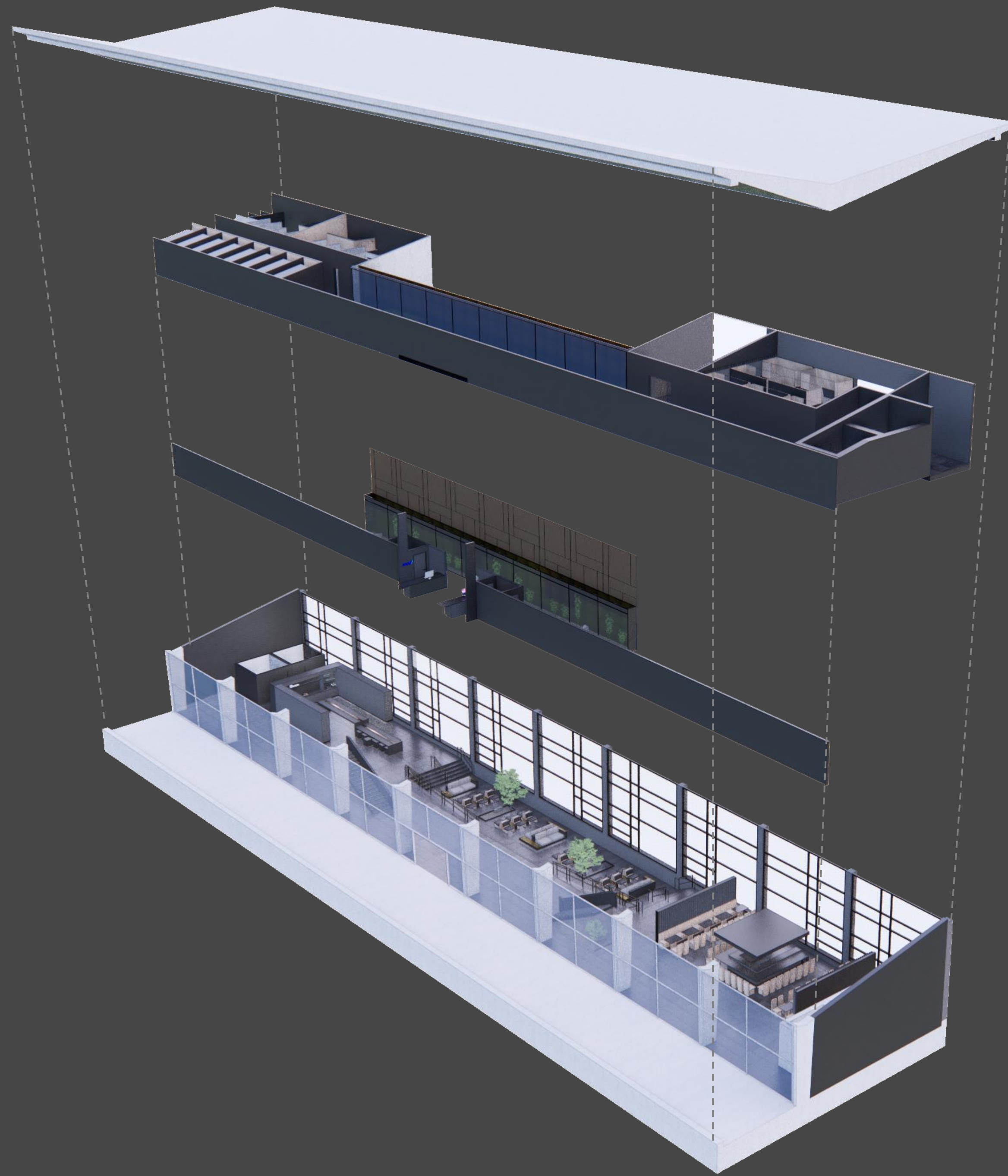
DIAGRAMS

THESE EXPLODED DIAGRAMS WERE CHOSEN TO BEST EXPRESS THE OVERALL CONCEPT AS WELL AS THE SPATIAL RELATIONSHIP OF THE PROGRAM.

UNDERSTANDING THAT JAPANESE CULTURE HIGHLY VALUES PRIVACY, THE KEY TO ORGANIZING THE PROGRAM WAS TO DIVIDE THE SPACES ACCORDING TO THEIR RESPECTIVE NEEDS.

AN EXAMPLE OF THIS IS THE LARGE FLOOR TO CEILING BAMBOO GARDEN WALL THAT BISECTS THE BUILDING. THIS IN ESSENCE ALLOWS THE SPACES BEHIND IT TO BE CONCEALED FROM VIEW UNTIL THE GUEST CHOOSES TO ENTER THEM.

THE DOLLHOUSE SECTIONAL VIEW BELOW DEMONSTRATES THE CONNECTION BETWEEN THE SUNKEN LOUNGE AND THE QUIET AREAS (GRAB N' GO AND SLEEPING PODS) AND MORE LIVELY SPACES (RESTAURANT AND BUSINESS)



ANA FIRST FLOOR RENDERS

RECEPTION + MAIN HALLWAY

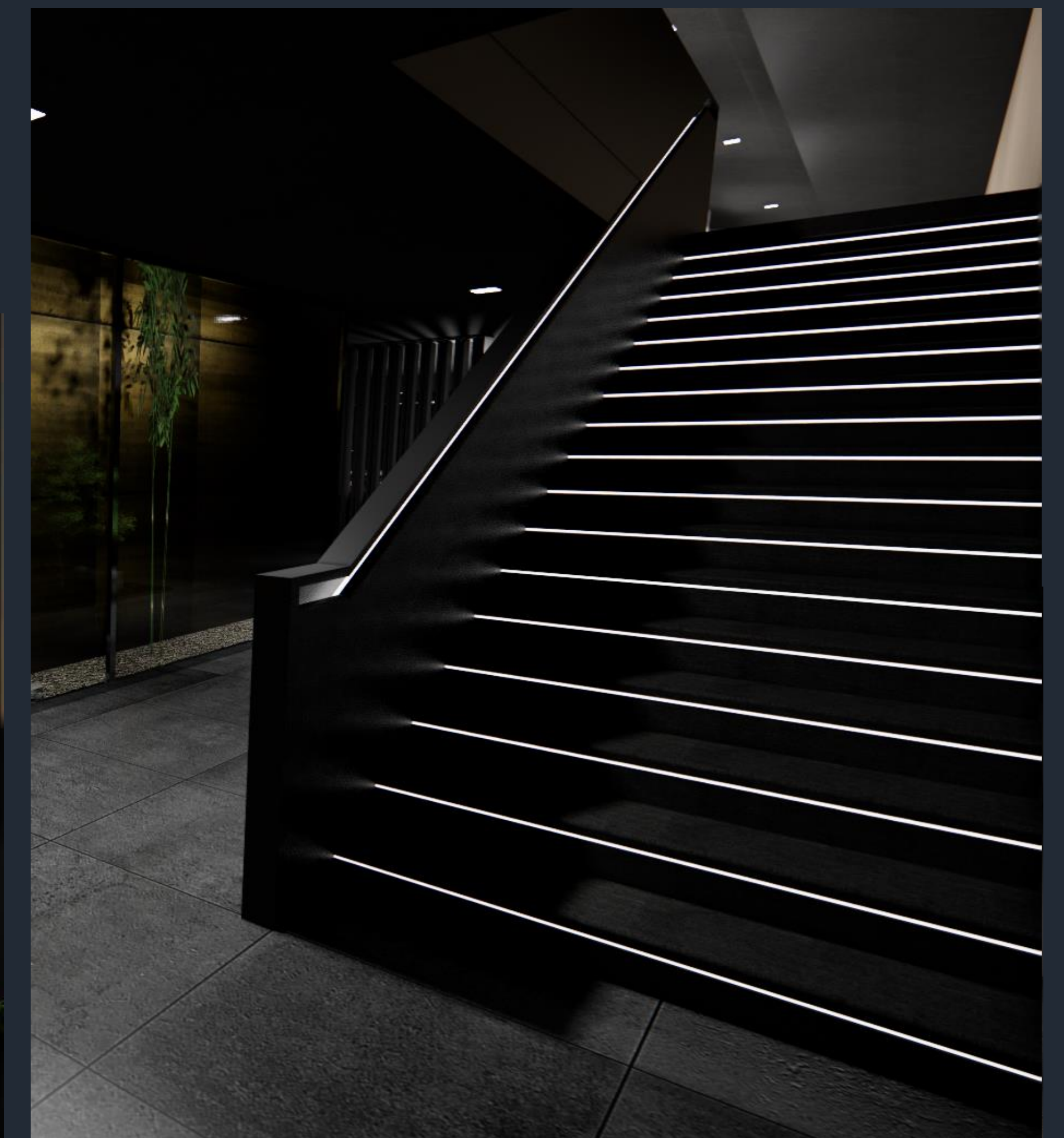
THE ENTRY IS PURPOSEFULLY DIVIDED INTO TWO SEPARATE RECEPTION DESKS, ALLOWING TRAVELERS TO QUICKLY ACCESS THE LOUNGE. THIS CONFIGURATION ALSO ALLUDES TO THE OVERALL ORGANIZATION OF THE LOUNGE. ONCE CHECKED IN, TRAVELERS HAVE TWO OPTIONS, THEY CAN EITHER OPT TO HEAD RIGHT, WHERE THEY CAN FIND THE RESTAURANT OR HEAD UPSTAIRS TO THE BUSINESS OFFICES, OR HEAD LEFT, WHERE THEY WILL FIND A GRAB N' GO FOR A QUICK SNACK OR BEVERAGE, OR UPSTAIRS TO THE SLEEPING PODS AND SHOWER ROOMS. EITHER CHOICE WILL ALSO LEAD THEM TO THE SUNKEN LOUNGE AREA THAT IS ONLY VISIBLE ONCE THEY HAVE CLEARED THE MAIN HALLWAY.

THE ENTIRE LENGTH OF THE MAIN HALLWAY IS FLANKED BY A BAMBOO ROCK GARDEN, THIS WAS AN IMPORTANT FEATURE TO INCLUDE AS THE JAPANESE CULTURE TRIES TO MAINTAIN A STRONG CONNECTION WITH THE NATURAL WORLD.

IN MANY WAYS THE JAPANESE EMBRACE NEW TECHNOLOGIES TO IMPROVE EVERYDAY LIFE, WHILE REMAINING STEEPED IN TRADITION. THE STAIRCASE HIGHLIGHTS THIS IDEA, WITH GUARDRAILS INTEGRATING ILLUMINATED HANDRAILS, AND LIGHTING ON THE STAIR RAISES THEMSELVES TO PROVIDE FOR SAFE CLIMBING.



STAIRS



SUNKEN LOUNGE

THE SUNKEN LOUNGE ALLOWS FOR GUESTS TO SIT BACK AND RELAX WHILE AWAITING THEIR NEXT FLIGHT. THIS SPACE IS WHAT CONNECTS ALL THE PROGRAMMATIC ELEMENTS OF THE PROJECT.

WHILE THE OTHER SPACES ARE LOWER IN CEILING HEIGHTS, THE LOUNGE IS MEANT TO PROVIDE A RELEASE. TRAVEL CAN BE QUITE STRESSFUL AND THE IDEA OF BRINGING THE OUTSIDE INSIDE WAS AN IMPORTANT FACTOR IN THE DESIGN.

THE LOUNGE IS HOME TO TWO ROCK GARDENS WITH JAPANESE MAPLE TREES THAT HELP FILTER AIR AND PROVIDE A SENSE OF CALM TO THE SPACE.

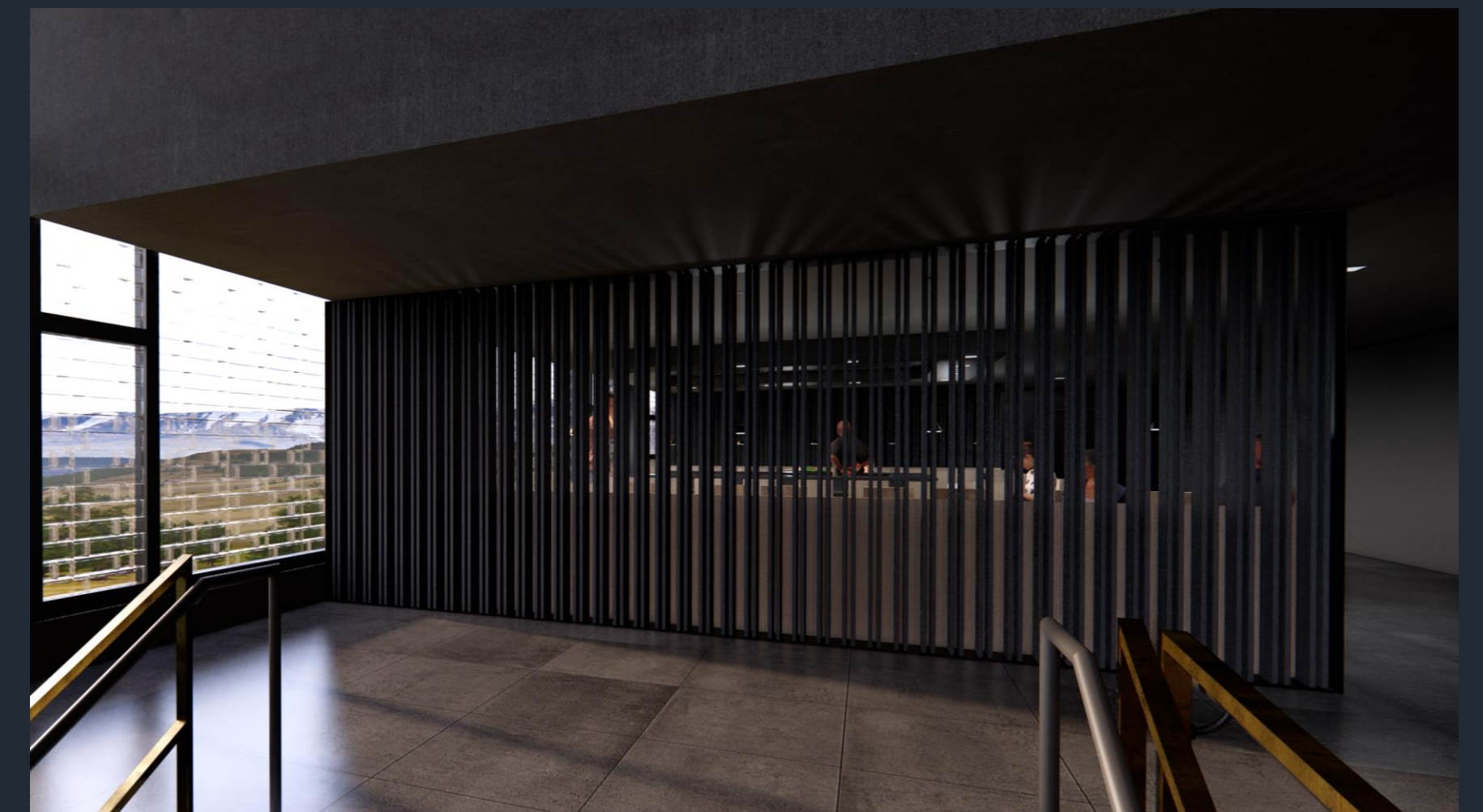
THE SPACE IS OUTFITTED WITH AMPLE SEATING AND TABLES WITH INTEGRATED WIRELESS CHARGERS FOR DEVICES AND SET DOWN DRINKS. A TRADITIONAL JAPANESE COLOR PALETTE OF NEUTRAL TONES WAS CHOSEN.

THE LARGE GLASS EXTERIOR WALL ALLOWS FOR AN ABUNDANCE OF NATURAL LIGHT TO ENTER WITHOUT OVERWHELMING THE TRAVELERS. THE FLOOR TO CEILING WOODEN PANELED WALL'S GEOMETRIC PATTERN IS AN HOMAGE TO THE SHOJI SCREEN.

THERE'S A BALANCE BETWEEN THE VERTICAL SPACE WITH OVERSIZED LIGHT FIXTURES, MEANT TO REPRESENT JAPANESE PAPER LANTERNS, AND THE GROUND PLANE WITH MINIMALIST LOW SEATING.



DETAILS



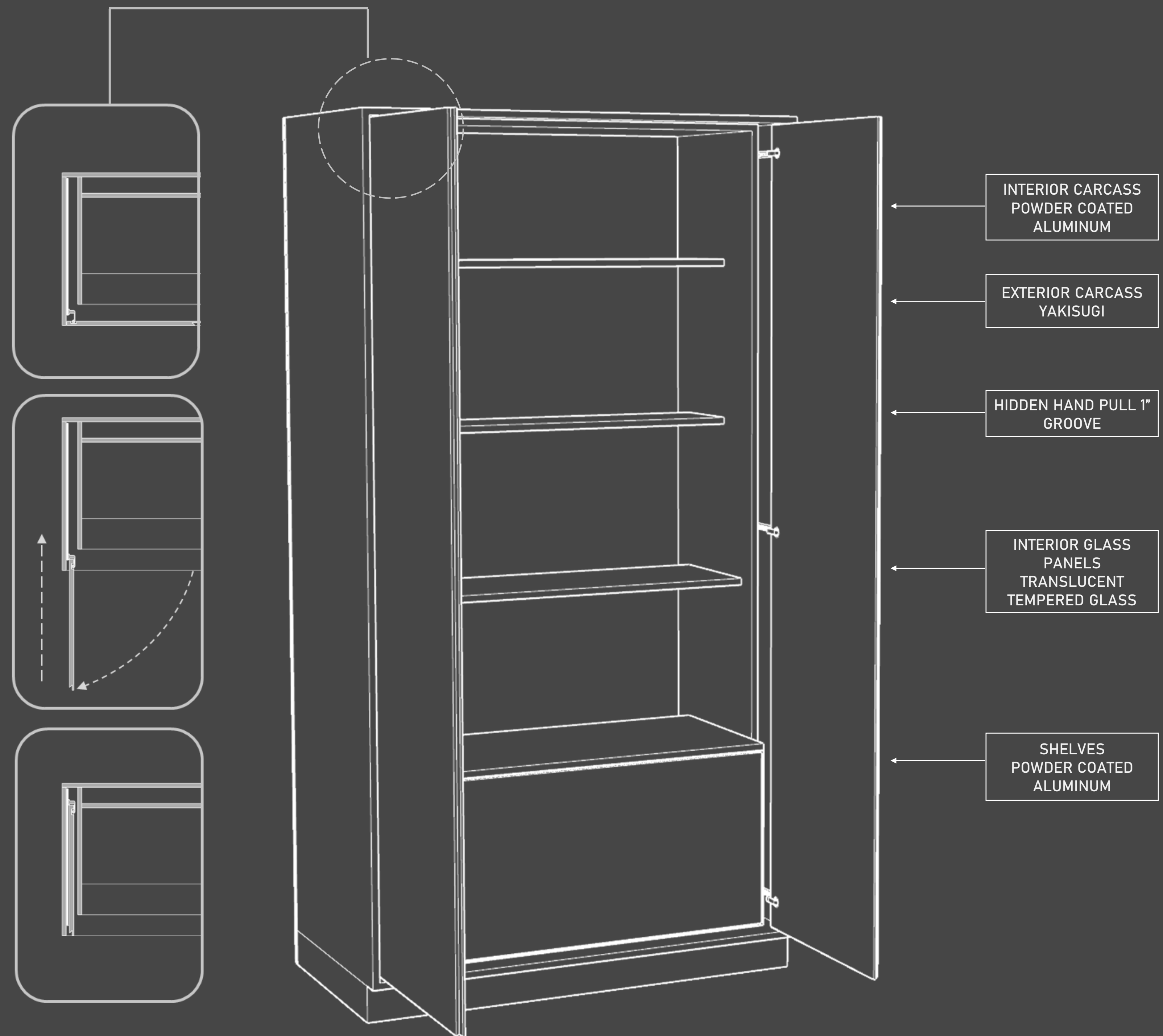
THE WOODEN SLATS SEPARATING THE SUSHI BAR FROM THE MAIN LOUNGE PROVIDE CLEAR SEPARATION WITHOUT BLOCKING LINES OF SIGHT. THE RESTAURANT AND THE SUNKEN REST AREA ARE CONSTANTLY CONCEALED AND REVEALED DEPENDING ON THE POSITION OF AN OBSERVER

GRAB 'N GO



SUSHI BAR



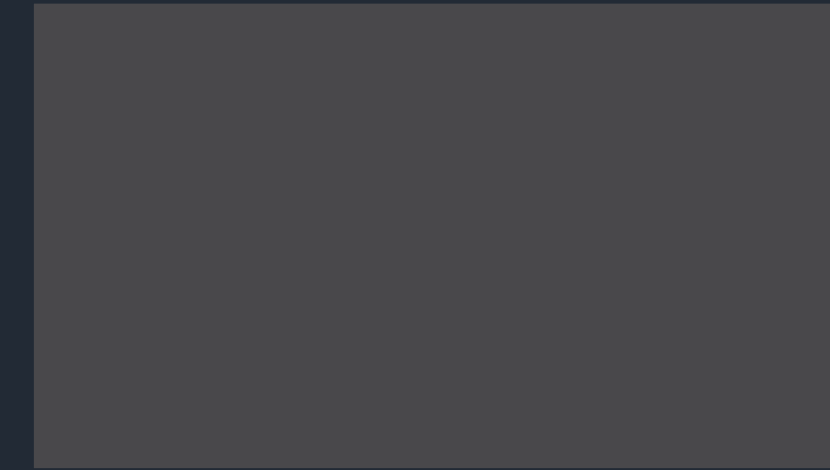


MATERIALS

EXTERIOR CARCASS - YAKISUGI IN EBONY



INTERIOR CARCASS- IN GREIGE



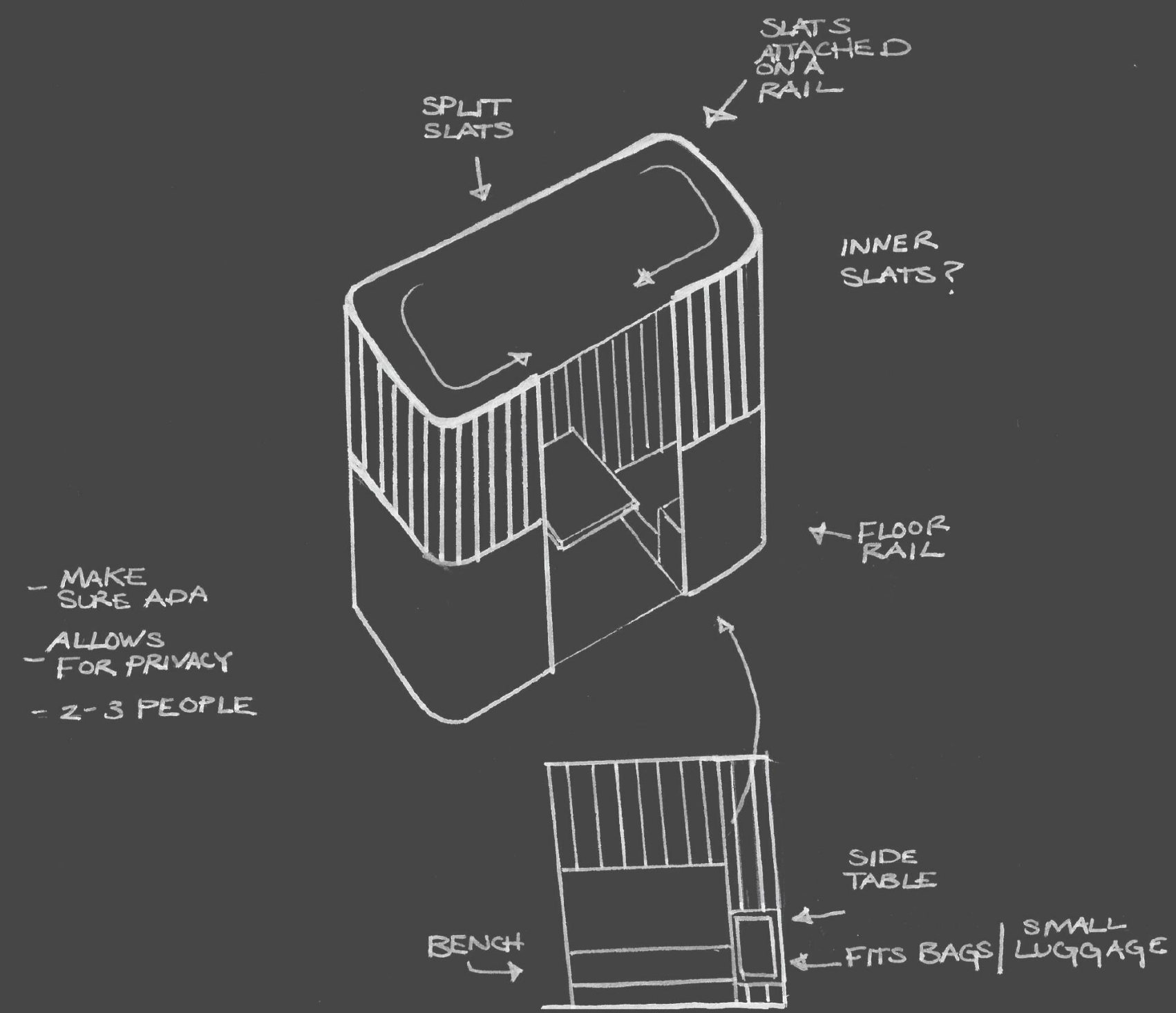
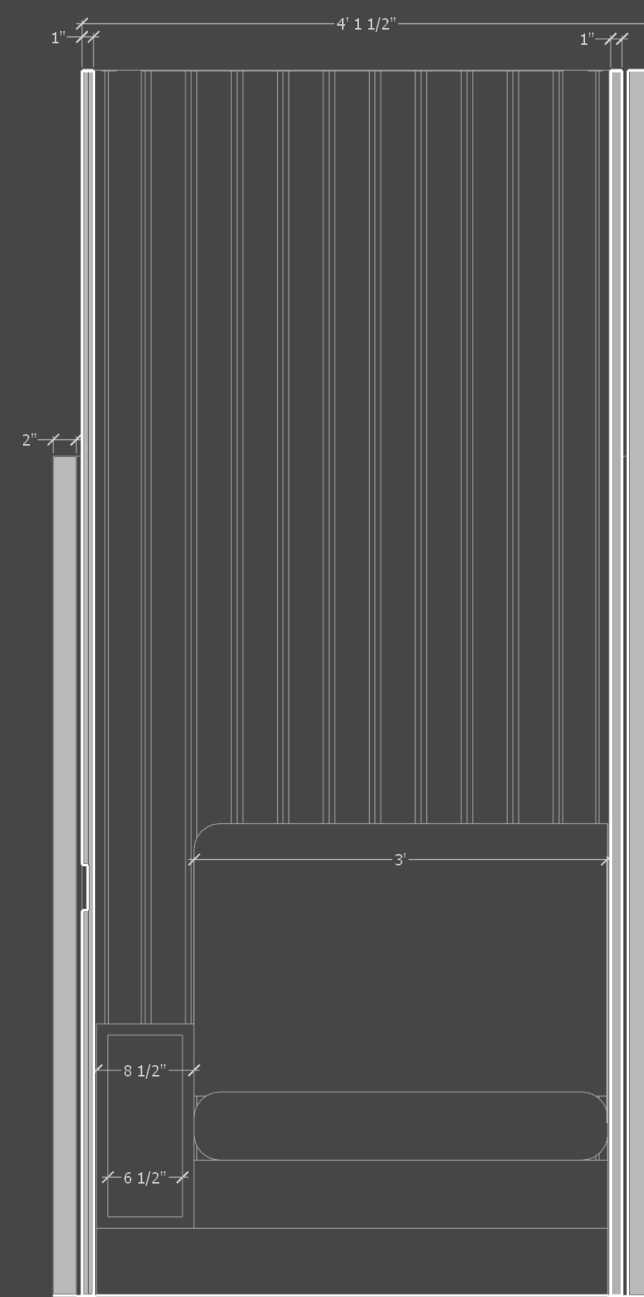
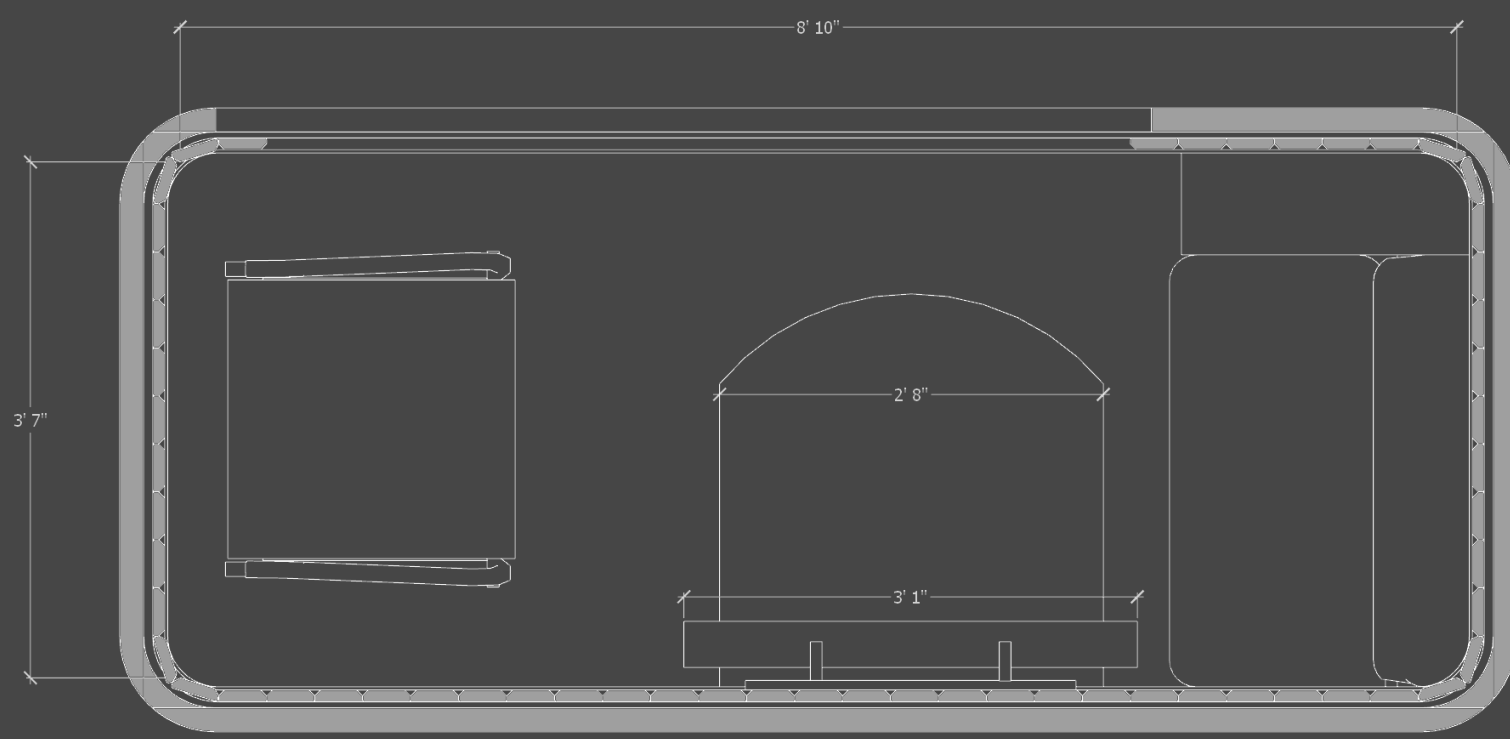
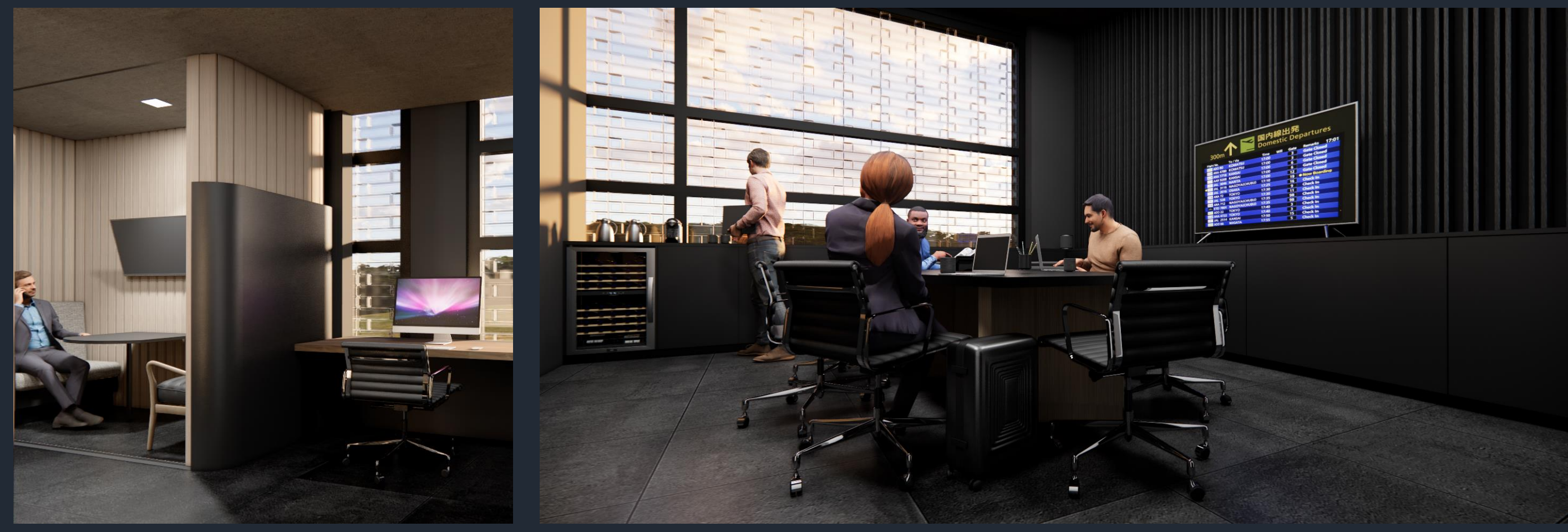
INTERIOR BACK PANEL-GLASS IN SNOW



THE GRAB N' GO CASEWORK IS INSPIRED BY THE TRADITIONAL JAPANESE ARCHITECTURAL ELEMENTS OF MA. MA MEANS "NEGATIVE SPACE", BUT THIS DOESN'T MEAN "EMPTY SPACE". IT IS CLOSER TO MEAN "OPEN SPACE" AND CAN BE VIBRANT AND DYNAMIC. ITEMS IN ROOMS ARE TEMPORARY. OBJECTS PLACED IN A SPACE ARE OFTEN FUNCTIONAL, BUT ALSO TRANSITORY. SPACE IS EMPTY AND FILLED AND THEN EMPTIED AGAIN. SPACE CAN BE EXPANDED OR CONDENSED BY SIMPLY OPENING OR CLOSING SLIDING SHOJI SCREENS. THIS ALLOWS FOR VISITORS TO HAVE PRIVACY OR OPENNESS. THE DESIGN OF THE CASEWORKS ALLOWS FOR THE GRAB N' GO AREA TO APPEAR MINIMALISTIC WHEN THE DOORS ARE CLOSED FOR THE EVENING, WHILE THEY CAN BE KEPT OPEN FOR OPERATING HOURS.

ANA BUSINESS OFFICE + DETAILS

THE BUSINESS OFFICE WAS DESIGNED TO PROVIDE MULTIPLE USES FOR TRAVELERS. WHETHER THEY ARE IN A LARGER GROUP NEEDING A PRIVATE SPACE TO CONDUCT A MEETING, OR SOMEONE NEEDING TO HOLD A VIDEO CONFERENCE, THIS SPACE ALLOWS FOR THOSE NEEDS. THERE ARE TWO SEPARATE AREAS FOR THIS: THE FIRST IS A LARGE MEETING ROOM THAT CAN HOLD A GROUP OF 8 - 10 PEOPLE, WHILE THE ROOM NEXT DOOR HAS INDIVIDUAL PODS THAT CAN BE MADE PRIVATE FOR SMALL MEETINGS. THERE IS ALSO A DEDICATED PRINTING STATION FOR THOSE IN NEED OF A QUICK PRINTOUT.



MATTE BLACK STAINLESS STEEL TOP RAIL

CRYPTOMERIA WOODEN SLATS

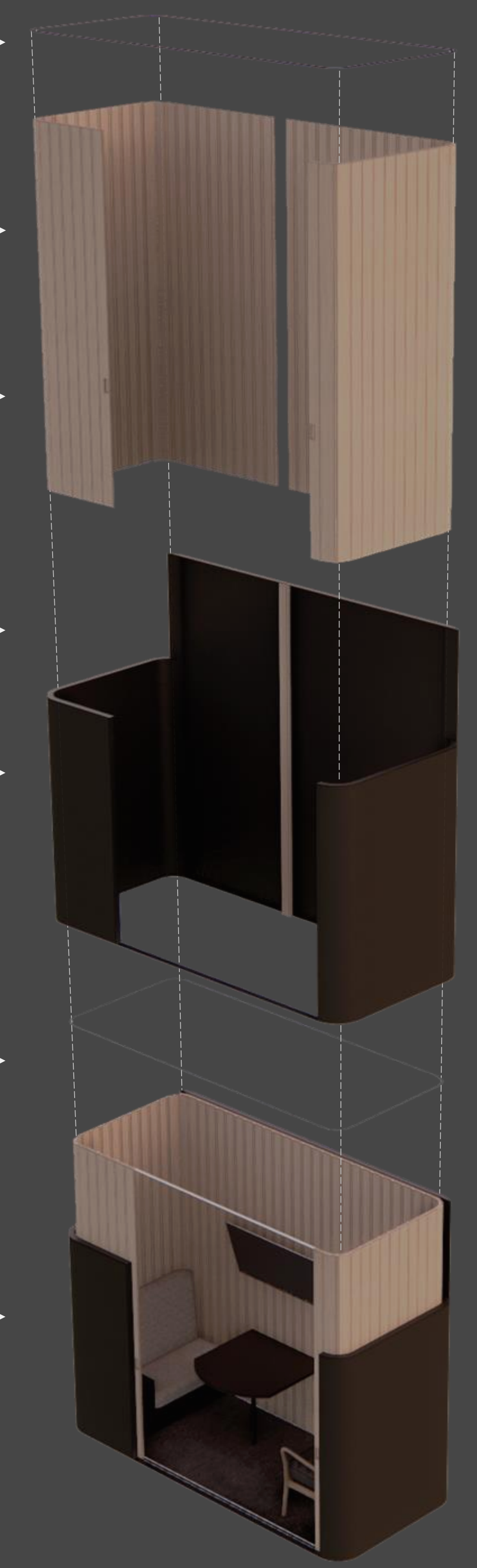
2" X 5" RECESSED PULL

MOUNTING SUPPORT

MATTE BLACK POWDER COATED ALUMINUM SHELL

MATTE BLACK STAINLESS STEEL BOTTOM RAIL

BOUCLE BENCH SEATING

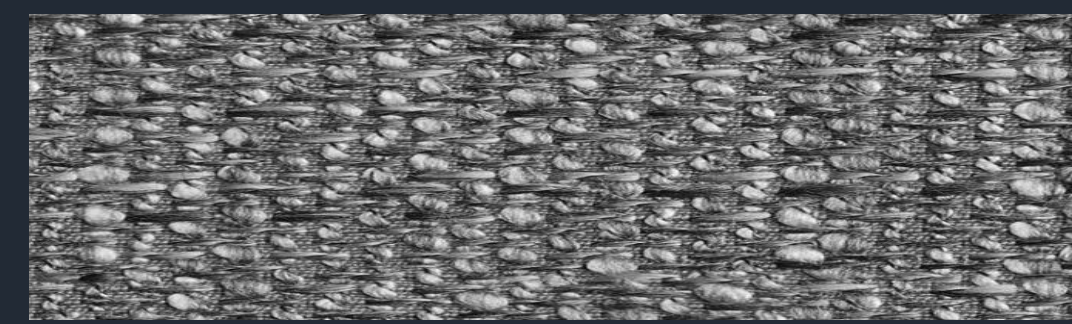


MATERIALS

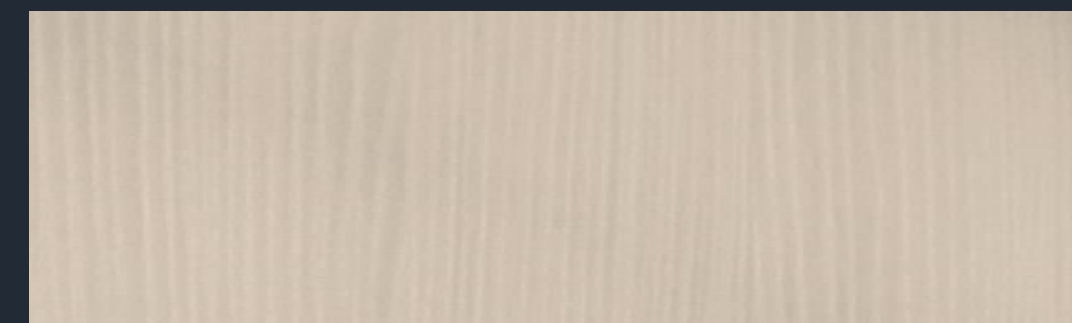
EXTERIOR SHELL - MATTE BLACK



FABRIC - BOUCLE IN GREIGE

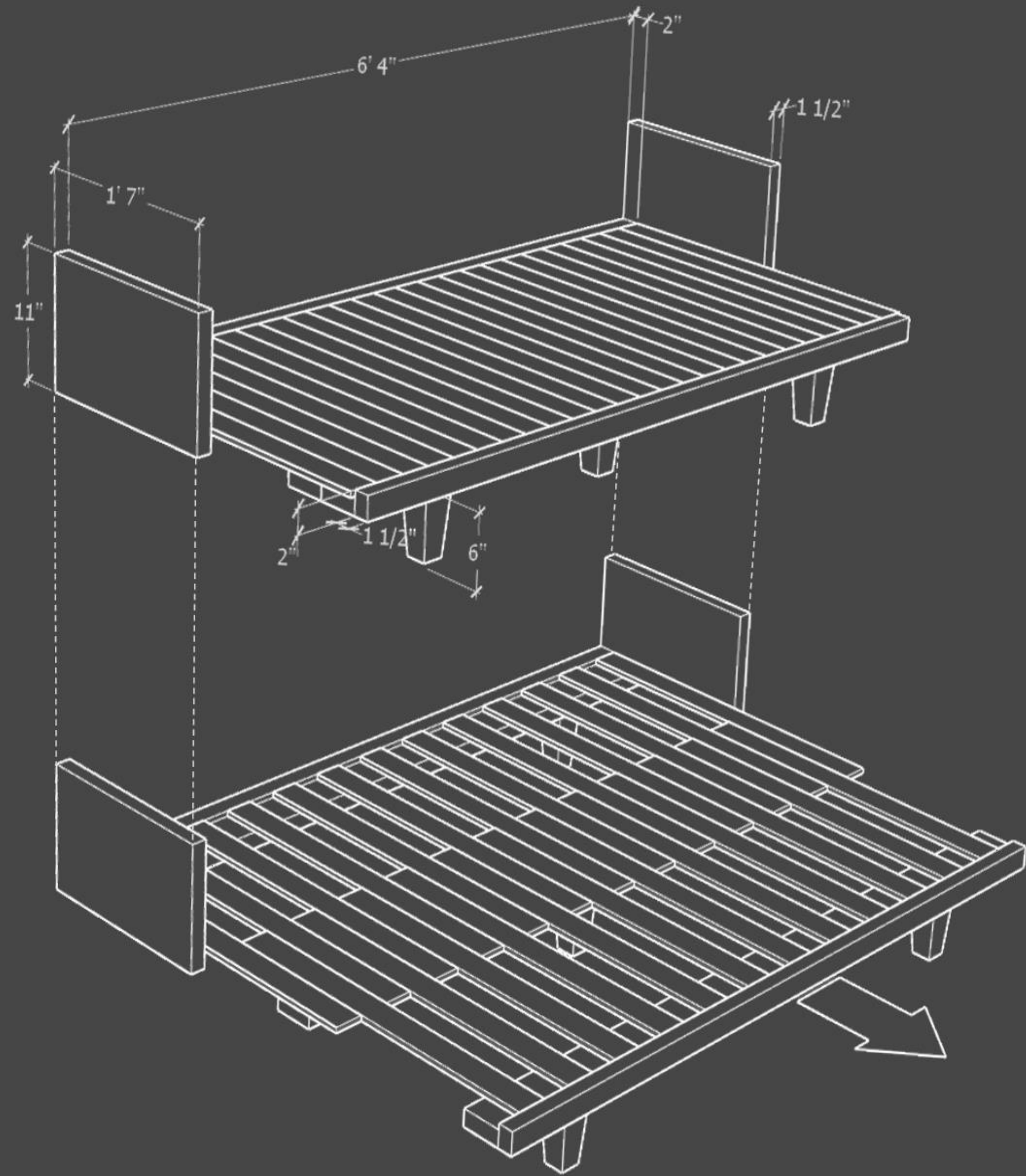
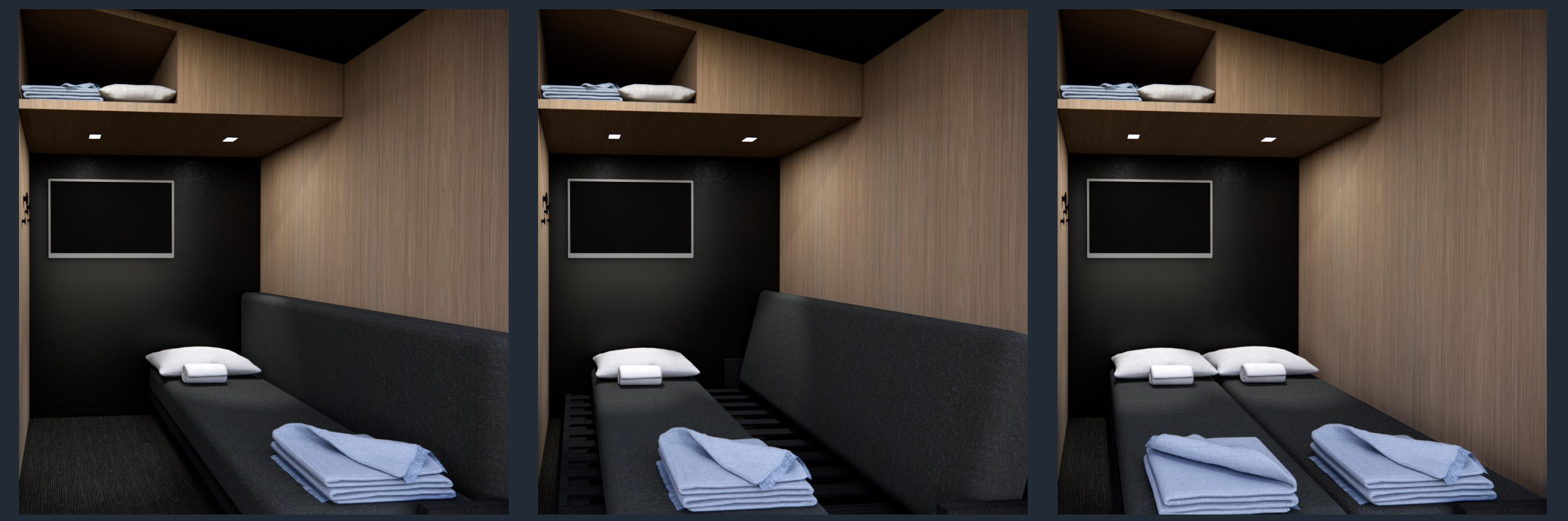


HINOKI WOOD - SLATS IN NATURAL



ANA SLEEPING POD + DETAIL

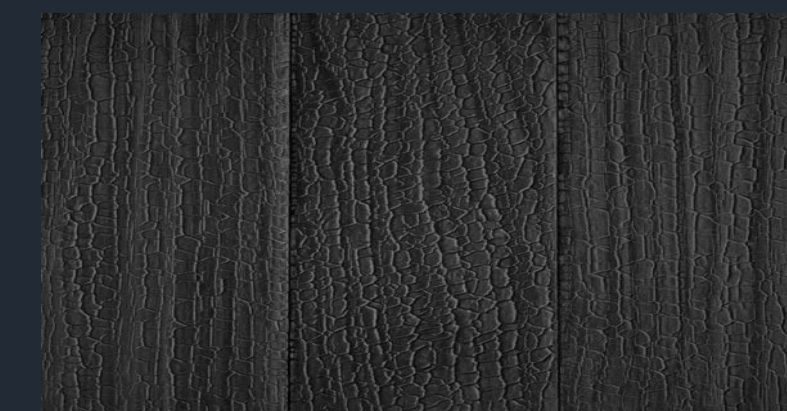
THE SLEEP PODS ARE A NOD TO THE JAPANESE CAPSULE HOTEL. THOUGH SLIGHT IN SQUARE FOOTAGE, THEY ARE WELL EQUIPPED TO OFFER REFUGE FOR WEARY TRAVELERS. BY USING THE VERTICAL SPACE, BUILT IN CASEWORK PROVIDES AREAS FOR EXTRA BEDDING, WORKSTATION, PULLOUT FULL LENGTH MIRROR, AND LUGGAGE STORAGE. ANOTHER KEY FEATURE IS THE CONVERTIBLE SOFA WHICH ALLOWS FOR SEATING AND SLEEPING FOR ONE OR TWO PEOPLE.



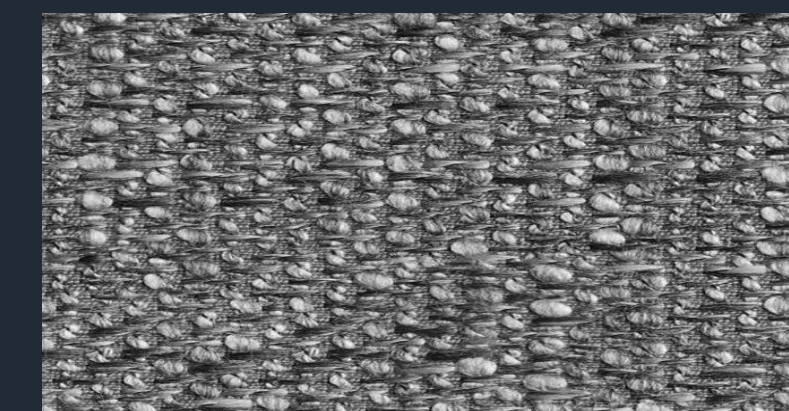
THE POD INCORPORATES A COMBINATION OF TRADITIONAL JAPANESE WOODS SUCH AS YAKISUGI, A BURNT CEDAR FOR THE ADAPTABLE BED FRAME, AND HINOKI, A JAPANESE CYPRESS, FOR THE WALL PANELING.

MATERIALS

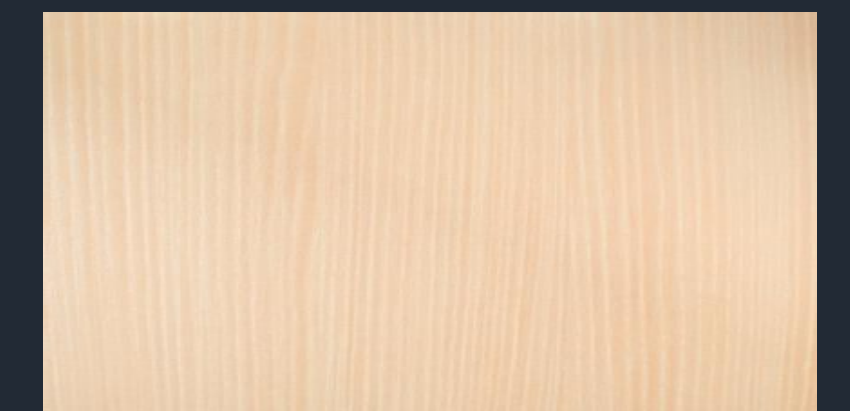
FRAME
YAKISUGI IN EBONY



CUSHION
BOUCLE IN GREIGE



PANEL
HINOKI IN NATURAL





ZEN CHAIR



ZEN SOFA



JIA CHAIR



EAMES MANAGEMENT CHAIR

ROXAS DESIGNS COLLECTION

Designer
Rory Tobias

Original Production Date
2021

Warranty
Lifetime

Inspired by Japanese furniture design, the Zen chair infuses ultra-minimalist elements utilizing regular shapes and natural materials that work together in harmony to provide comfort while being practical and durable.

Materials
Horse wood

Finishes
Natural

Weight
50 lbs (22.7 kg)

Dimensions
18 in W x 20 in D x 36 in H

ROXAS DESIGNS COLLECTION

Designer
Rory Tobias

Original Production Date
2021

Warranty
Lifetime

Inspired by Japanese furniture design, the Zen sofa infuses ultra-minimalist elements utilizing regular shapes and natural materials that work together in harmony to provide comfort while being practical and durable.

Materials
Powder coated steel
Fabric Boucle
Bronze

Finishes
Matte black

Weight
200 lbs (90.7 kg)

Dimensions
100 in W x 38 in D x 30 in H

A de T

JIA CHAIR

Materials
Solid wood
Fabric COM

Dimensions
34 in (86.5 cm) W x 34 3/4 in (88.5 cm) D x 28 1/2 in (72.5 cm) H

Weight
110 lbs (49.9 kg)

Packing
White glove delivery
114 lbs (51.7 kg)

Upholstery requirements
Solid - 4 yards
Patterned - 5 yards
6 in x 6 in fabric swatch required for approval

Finishes

- Natural oak
- Fumed oak
- Oxidized oak
- Walnut

Handmade in Los Angeles

www.stellardetroupe.com | info@stellardetroupe.com | 325.870.5505

HermanMiller Collection
Eames® Aluminum Group Management Chair

Designer
Charles and Ray Eames

Original Production Date
1958

Warranty
12 years

Originally designed as outdoor seating for industrialist Frank Miller's home, this graceful and supportive chair by Charles and Ray Eames delivers maximum comfort in a minimum profile. Now available in new finishes and materials, it features a low back with arms and a graceful silhouette that suits spaces from the living room to an executive office.

Adjustable height, incl. 1.31*
Manual with Casters

Adjustable height, incl. 1.31*
Manual with Casters

Adjustable height, incl. 2.31*
Pneumatic with Casters

© 2019 Herman Miller, Inc.



Connection | conceal + reveal

Thank you!